

# CROSSLAND OTTER HUNT

16 St George Street,  
London,  
W1S 1FD

---

A 7,000 sq ft Rare Embassy Building  
in a Refined Mayfair Location

---

7,234 sq ft (672.06 sq m)



020 7408 1114  
[www.coh.eu](http://www.coh.eu)

# CROSSLAND OTTER HUNT

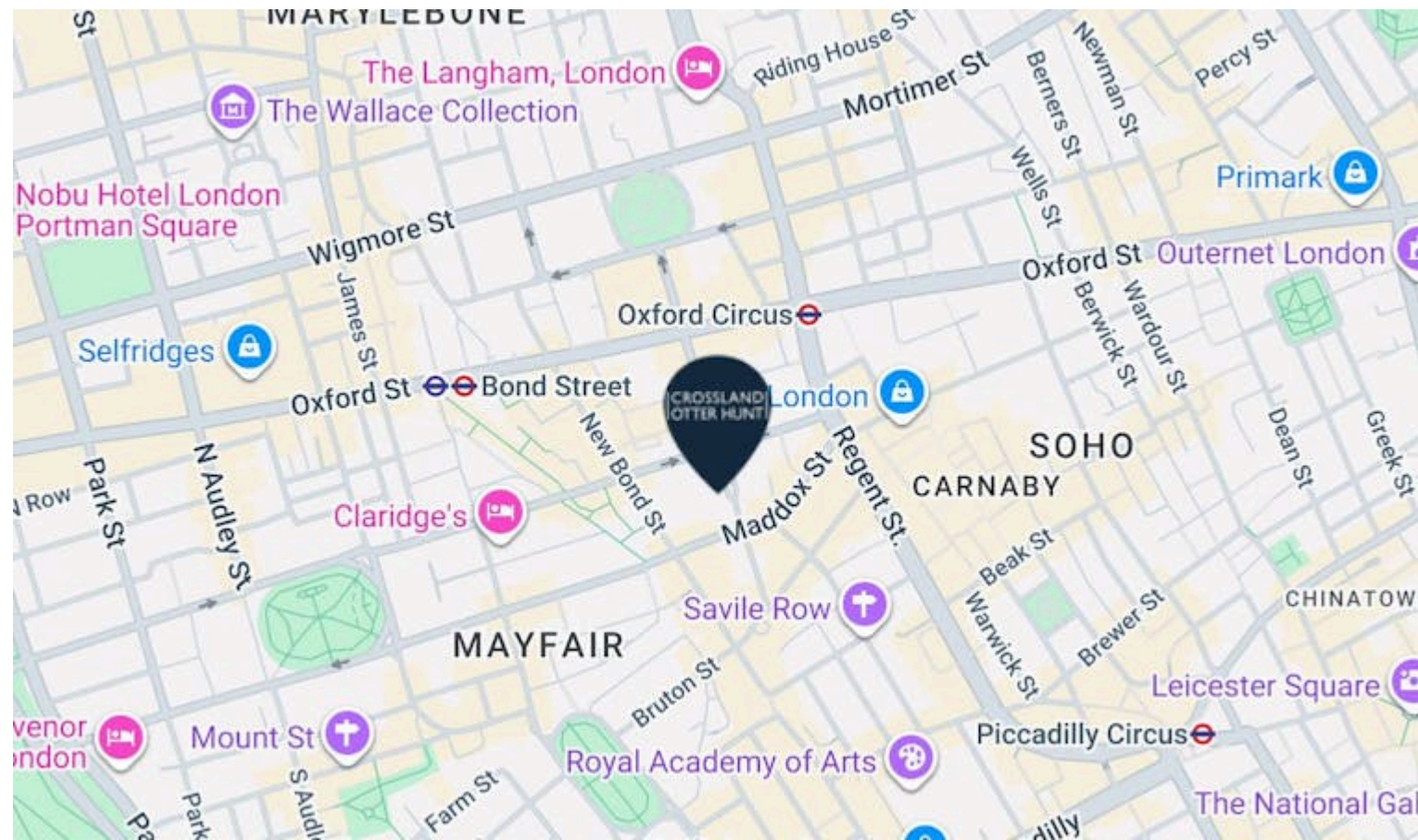
16 St George Street,  
London,  
W1S 1FD

A 7,000 sq ft Rare Embassy Building  
in a Refined Mayfair Location

7,234 sq ft (672.06 sq m)

[View Online →](#)

020 7408 1114  
[www.coh.eu](http://www.coh.eu)



## Nearest Stations



Oxford Circus  
(0.2 Miles)

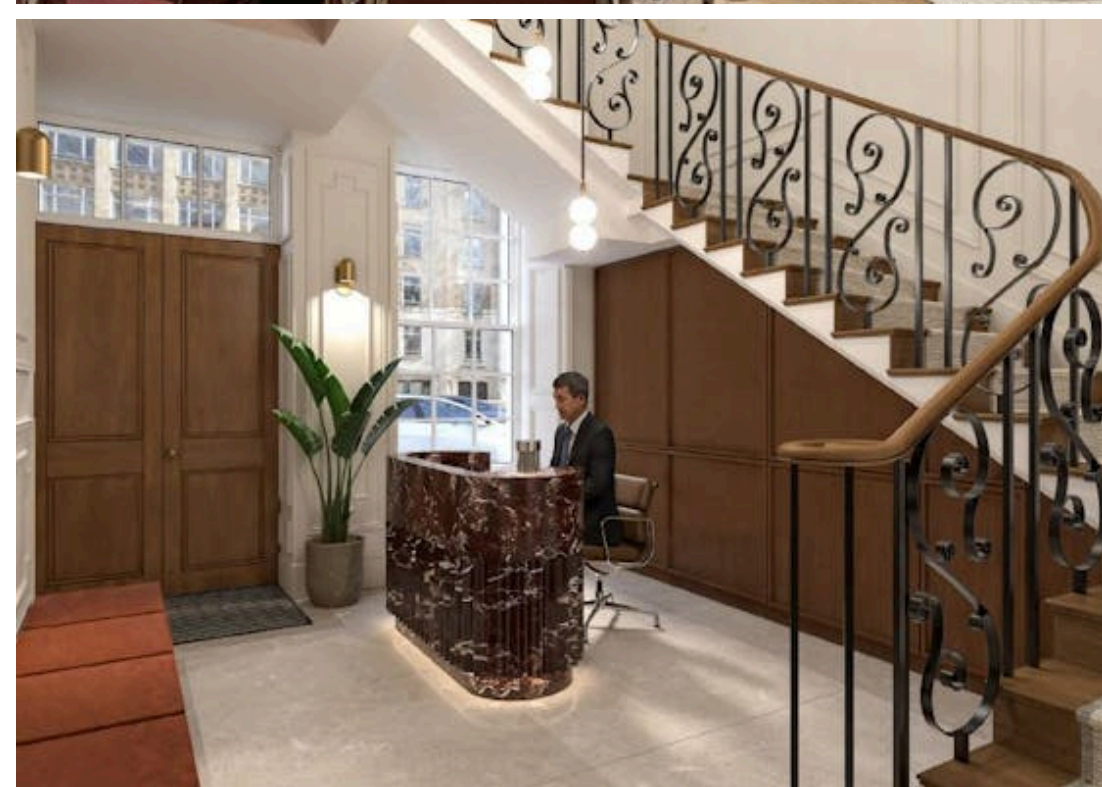


Bond Street  
(0.3 Miles)



Green Park  
(0.4 Miles)

The building occupies a prominent position on St George Street just off Hanover Square in the heart of London's Mayfair. Surrounded by world class retail, exclusive restaurants and the finest hotels.



# CROSSLAND OTTER HUNT

16 St George Street,  
London,  
W1S 1FD

---

A 7,000 sq ft Rare Embassy Building  
in a Refined Mayfair Location

---

7,234 sq ft (672.06 sq m)

---

[View Online →](#)

---

020 7408 1114

[www.coh.eu](http://www.coh.eu)



- Embassy use
- Undergoing full restoration
- Private courtyard
- Prestigious location
- Spectacular roof terrace and private terraces throughout the building
- Boutique end of trip facilities

## Accommodation

The accommodation comprises the following areas:

| NAME         | SQ FT | SQ M   | RENT        | AVAILABILITY |
|--------------|-------|--------|-------------|--------------|
| 5th          | 721   | 66.98  | £170 /sq ft | Available    |
| 4th          | 1,066 | 99.03  | £170 /sq ft | Available    |
| 3rd          | 1,249 | 116.04 | £170 /sq ft | Available    |
| 2nd          | 1,249 | 116.04 | £170 /sq ft | Available    |
| 1st          | 872   | 81.01  | £170 /sq ft | Available    |
| Ground       | 904   | 83.98  | £170 /sq ft | Available    |
| Lower Ground | 1,173 | 108.98 | £170 /sq ft | Available    |
| Total        | 7,234 | 672.06 |             |              |

# CROSSLAND OTTER HUNT

## CONTACT US



Nick Sinclair

02073992733 | 07970511730

nick@coh.eu



Phil Frenay

02073992742 | 07818566174

phil@coh.eu



Charlotte Steele

020 7408 1114 | 07503625481

charlotte@coh.eu

020 7408 1114

www.coh.eu

## Description

A prestigious 7,000 sq ft building within a Georgian masterpiece which is to undergo a full restoration with the addition of a new 5th floor and spectacular roof terrace located in the heart of Mayfair. The building is accessed by way of an impressive reception area with a grand period staircase and a 6 person lift serving all floors. Boutique end of journey facilities are to be created in the lower ground floor which can be separately accessed from the street. The building will total over 7,234 sq ft over the lower ground, ground and 5 upper floors with over 1,100 sq ft of private outside space. The 5th floor will also benefit from a large 290 sq ft terrace offering stunning chimney pot views across Mayfair as well as a private courtyard on the ground floor.

## Location

The building occupies a prominent position on St George Street just off Hanover Square in the heart of London's Mayfair. Surrounded by world class retail, exclusive restaurants and the finest hotels.

## Viewings

Strictly through Crossland Otter Hunt.

## Terms

Available by way of a new lease.

## Use

Suitable for office or embassy use.

## EPC

Upon enquiry

## ANTI MONEY LAUNDERING

The successful applicant will be required to provide two forms of ID and proof/source of funds, to satisfy anti-money laundering protocols.

# CROSSLAND OTTER HUNT

[www.coh.eu](http://www.coh.eu)



Visit Our Office  
3-5 Barrett Street  
London  
W1U 1AY