

# CROSSLAND OTTER HUNT

29 Curzon Street,  
W1J 7TR

Period Mayfair Ground Floor Office To  
Let - 793 sq ft

793 sq ft (73.67 sq m)

020 7408 1114  
[www.coh.eu](http://www.coh.eu)



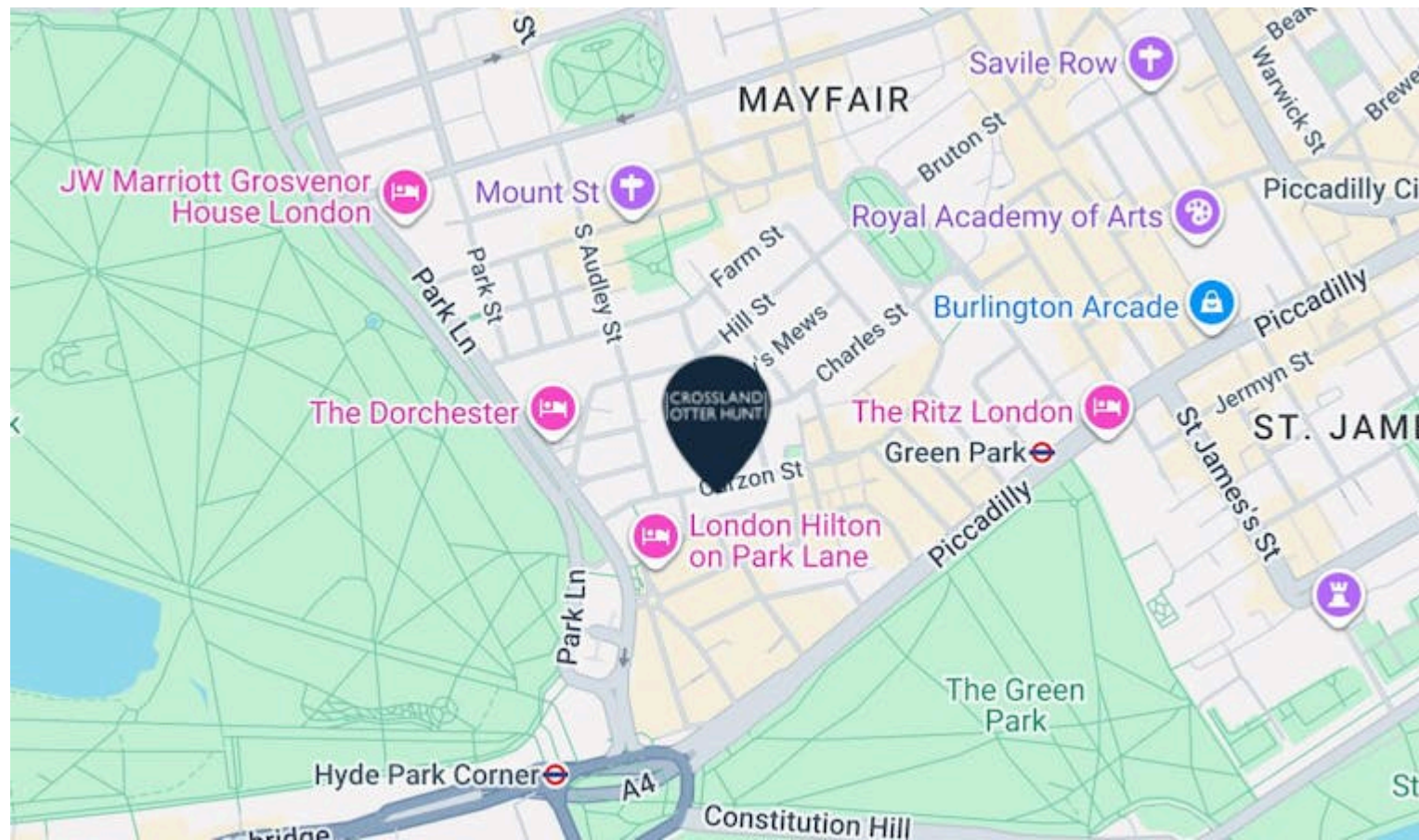
# CROSSLAND OTTER HUNT

29 Curzon Street,  
W1J 7TR

Period Mayfair Ground Floor Office To  
Let - 793 sq ft

793 sq ft (73.67 sq m)

[View Online →](#)



## Nearest Stations



Green Park  
(0.3 Miles)



Hyde Park Corner  
(0.3 Miles)

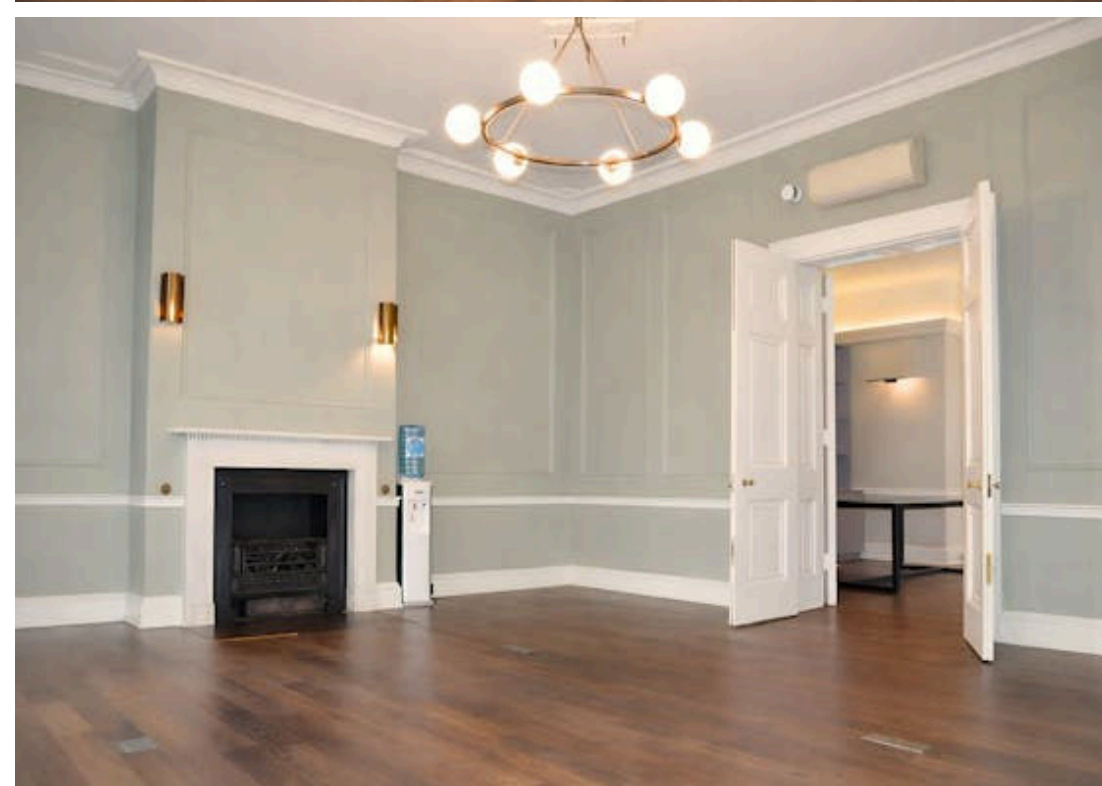
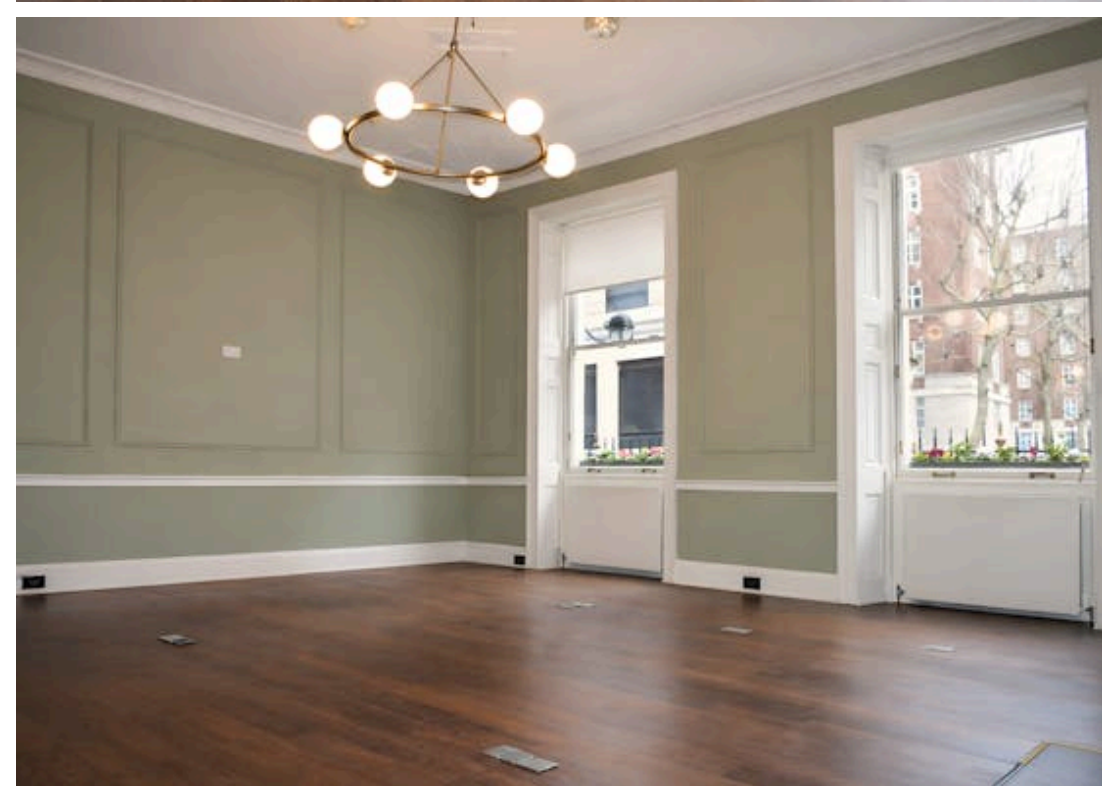
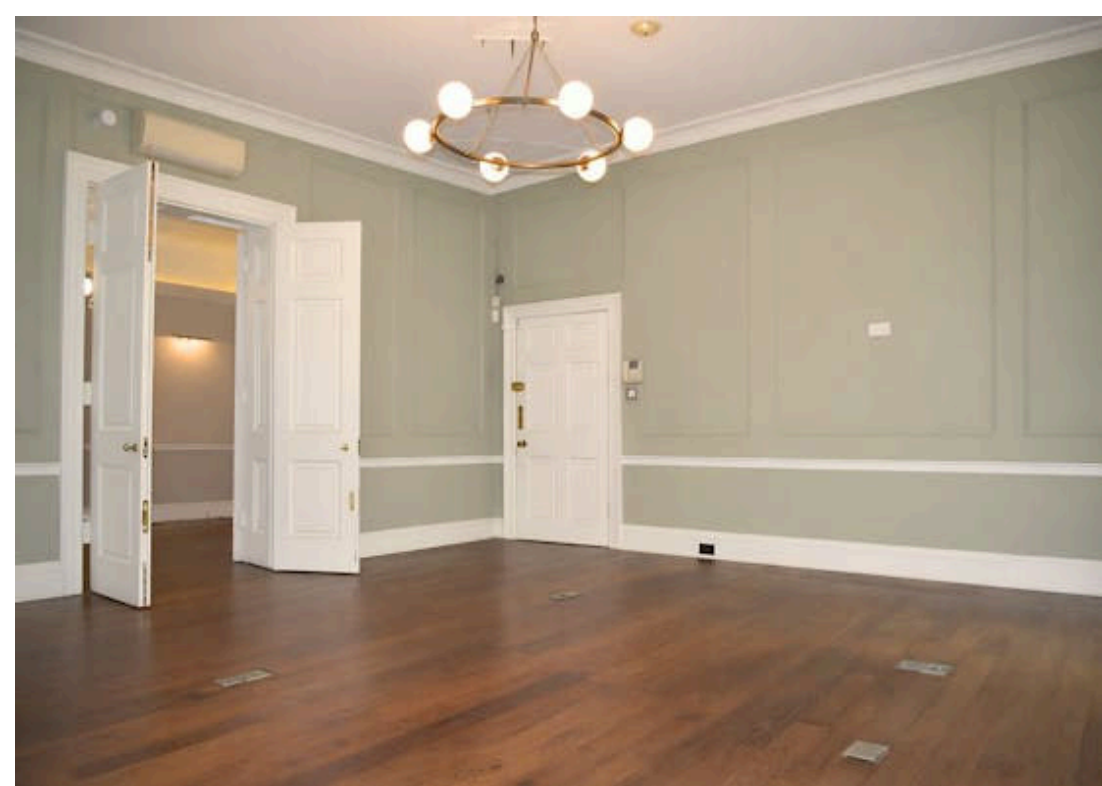


Bond Street  
(0.5 Miles)

29 Curzon Street is situated on the south side of the street between Park Lane and Hertford Street. The pubs and restaurants of Shepherd Market are close at hand and Hyde Park is just to the west. Green Park Station is nearby, giving access to the Jubilee, Piccadilly and Victoria lines.

020 7408 1114

[www.coh.eu](http://www.coh.eu)



# CROSSLAND OTTER HUNT

29 Curzon Street,  
W1J 7TR

---

Period Mayfair Ground Floor Office To  
Let - 793 sq ft

---

793 sq ft (73.67 sq m)

---

[View Online →](#)

---

020 7408 1114  
[www.coh.eu](http://www.coh.eu)



- Attractive Period Building
- Comfort Cooling
- No VAT on rent and service charges
- Period Features
- High Ceilings
- Wooden flooring

## Accommodation

The accommodation comprises two interlinking rooms on the ground floor of this striking period building with the following areas:

NAME	SQ FT	SQ M	RENT	RATES PAYABLE	SERVICE CHARGE	TOTAL MONTH	AVAILABILITY
Ground	793	73.67	£67,500 /annum	£35,520 /annum	£20,000 /annum	£10,251.67	Available
Total	793	73.67				£10,251.67	

# CROSSLAND OTTER HUNT

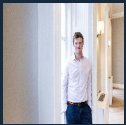
## CONTACT US



Mike MacKeith  
07831361722  
mike@coh.eu



Mathis Piquiot  
07856686966  
mathis@coh.eu



Phil Frenay  
02073992742 | 07818566174  
phil@coh.eu

020 7408 1114

[www.coh.eu](http://www.coh.eu)

## Location

29 Curzon Street is situated on the south side of the street between Park Lane and Hertford Street. The pubs and restaurants of Shepherd Market are close at hand and Hyde Park is just to the west. Green Park Station is nearby, giving access to the Jubilee, Piccadilly and Victoria lines.

## Rateable Value £74,000

Rates are effective April 2026

## Service Charge

Includes heating, lighting, cleaning of common parts, small power, and building maintenance. Please note VAT is not charged on the service charge.

## Description

A ground floor office suite comprising 2 linked rooms in a very attractive period building. The suite benefits from cooling and heating, wooden flooring, great natural light and WCs on the lower ground floor.

## EPC

C

## ANTI MONEY LAUNDERING

The successful applicant will be required to provide two forms of ID and proof/source of funds, to satisfy anti-money laundering protocols.

# CROSSLAND OTTER HUNT

[www.coh.eu](http://www.coh.eu)



Visit Our Office  
3-5 Barrett Street  
London  
W1U 1AY