

CROSSLAND OTTER HUNT

25 Upper Brook Street,
London,
W1K 7QD

Boutique Mayfair Office Suite
Available to Let

1,010 sq ft (93.83 sq m)

020 7408 1114
www.coh.eu



CROSSLAND OTTER HUNT

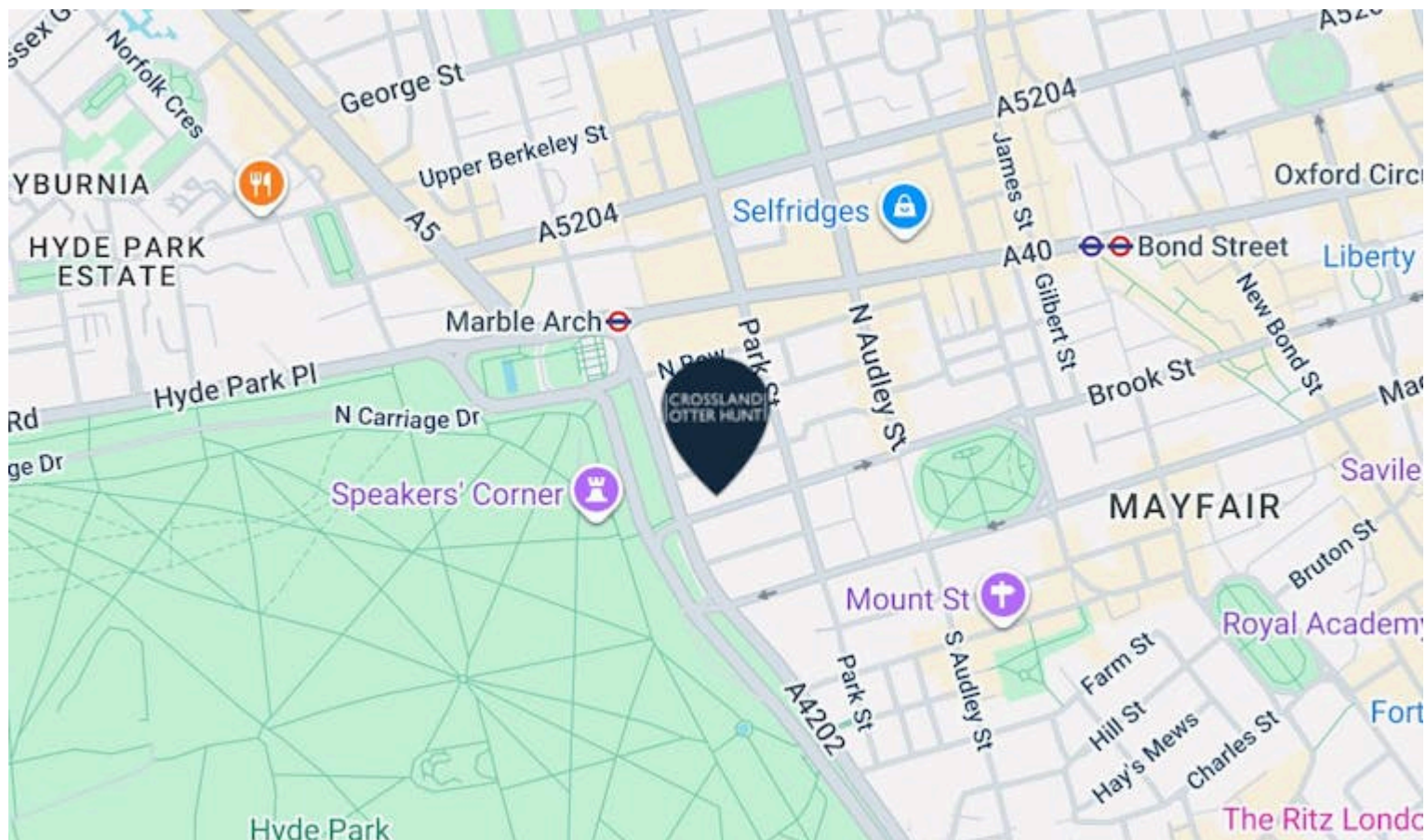
25 Upper Brook Street,
London,
W1K 7QD

Boutique Mayfair Office Suite
Available to Let

1,010 sq ft (93.83 sq m)

[View Online →](#)

020 7408 1114
www.coh.eu



Nearest Stations



Marble Arch
(0.2 Miles)

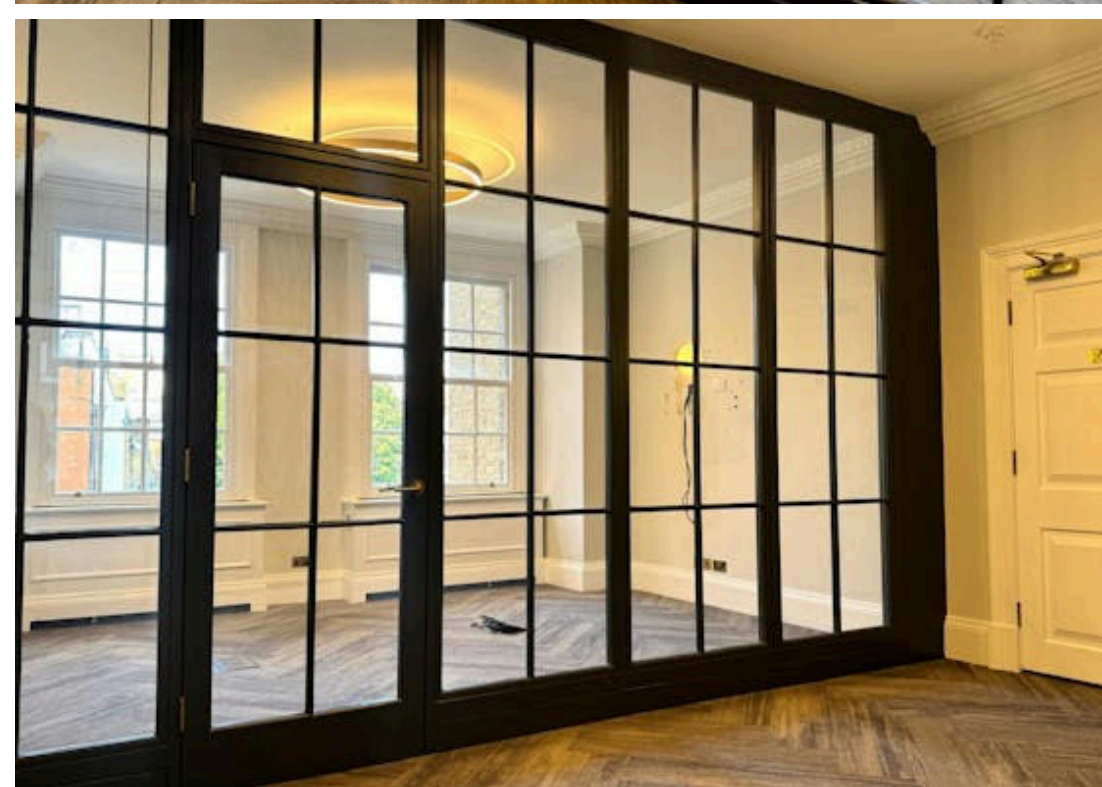
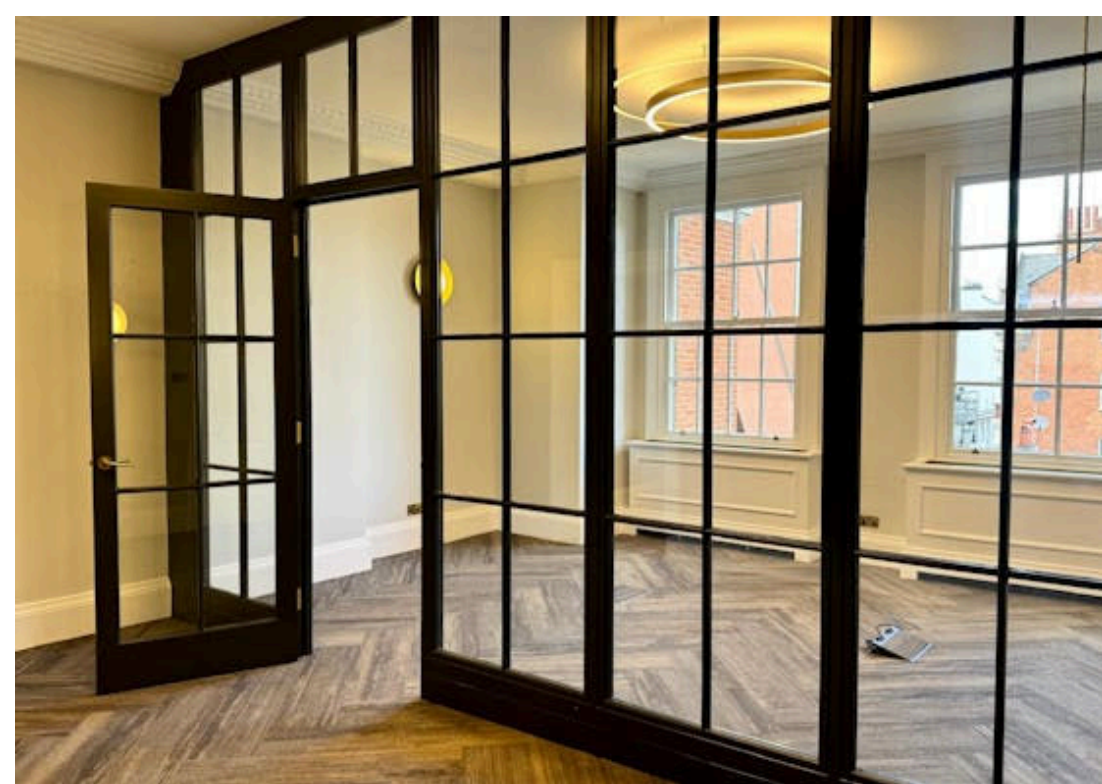


Bond Street
(0.3 Miles)



Hyde Park Corner
(0.6 Miles)

25 Upper Brook Street is a Grade II listed building situated in the heart of Mayfair. Located on the north side of the street, the property sits between Park Lane and Grosvenor Square and is within easy walking distance of Marble Arch and Bond Street Underground stations providing excellent transport links via the Central, Jubilee and Elizabeth lines. Additionally several car parks are nearby.



CROSSLAND OTTER HUNT

25 Upper Brook Street,
London,
W1K 7QD

Boutique Mayfair Office Suite
Available to Let

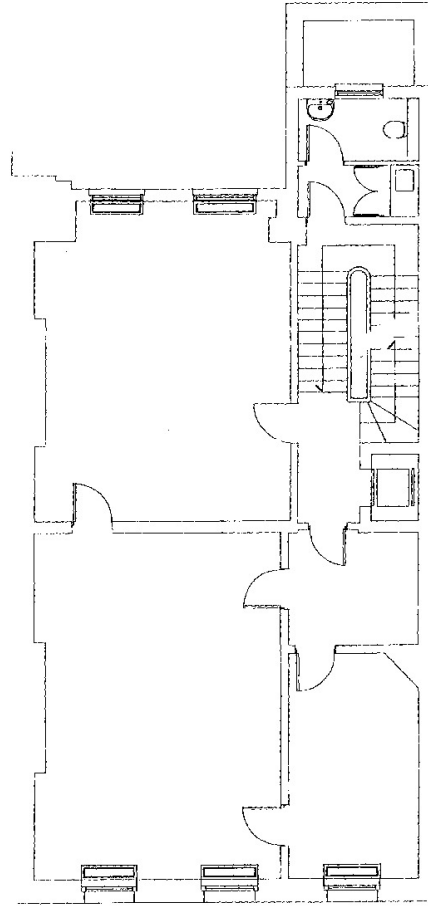
1,010 sq ft (93.83 sq m)

[View Online →](#)

020 7408 1114
www.coh.eu



- Boutique Mayfair Office Suite
- Generous Ceiling Heights
- Manned Reception
- Characterful Features
- Excellent Natural Light



Third floor

Accommodation

The accommodation comprises the following areas:

NAME	SQ FT	SQ M	RENT (SQ FT)	RATES PAYABLE (SQ FT)	SERVICE CHARGE (SQ FT)	AVAILABILITY
3rd	1,010	93.83	£97.50	£45.88	£15.50	Under Offer

CROSSLAND OTTER HUNT

CONTACT US



Nick Sinclair

02073992733 | 07970511730

nick@coh.eu



Mathis Piquiot

07856686966

mathis@coh.eu

020 7408 1114

www.coh.eu

Description

The third floor comprises four interconnecting rooms – two spacious rooms and two smaller, adaptable spaces ideal for private offices or meeting rooms. One of the larger rooms includes a partitioned area that has historically served as a boardroom. The suite is enhanced by a generous ceiling height and abundant natural light thanks to large windows offering superb views across Mayfair. The building also boasts a professional manned reception.

Location

25 Upper Brook Street is a Grade II listed building situated in the heart of Mayfair. Located on the north side of the street, the property sits between Park Lane and Grosvenor Square and is within easy walking distance of Marble Arch and Bond Street Underground stations providing excellent transport links via the Central, Jubilee and Elizabeth lines. Additionally several car parks are nearby.

Viewings

Strictly through the sole agents Crossland Otter Hunt.

Terms

Available by way of a new lease direct from the landlord.

Amenities & Specifications

amenities_specifications

EPC

B (46)

ANTI MONEY LAUNDERING

The successful applicant will be required to provide two forms of ID and proof/source of funds, to satisfy anti-money laundering protocols.

CROSSLAND OTTER HUNT

www.coh.eu



Visit Our Office
3-5 Barrett Street
London
W1U 1AY