

# CROSSLAND OTTER HUNT

26 Finsbury Square,  
London,  
EC2A 1DS

---

Fitted Office Space with a Large  
Terrace

---

5,090 sq ft (472.88 sq m)

020 7408 1114  
[www.coh.eu](http://www.coh.eu)



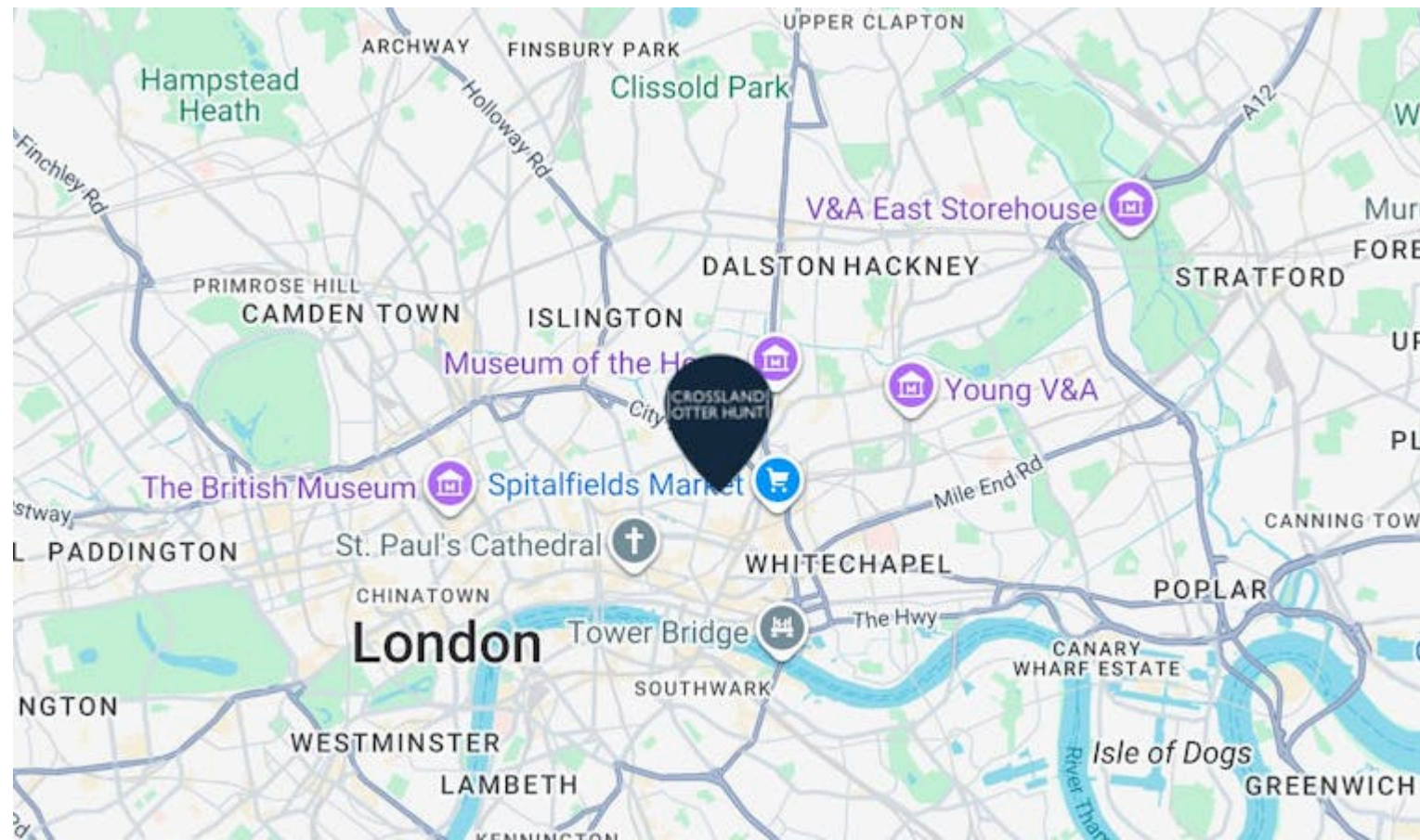
# CROSSLAND OTTER HUNT

26 Finsbury Square,  
London,  
EC2A 1DS

Fitted Office Space with a Large  
Terrace

5,090 sq ft (472.88 sq m)

[View Online →](#)



## Nearest Stations



Moorgate  
(0.3 Miles)



Old Street  
(0.3 Miles)



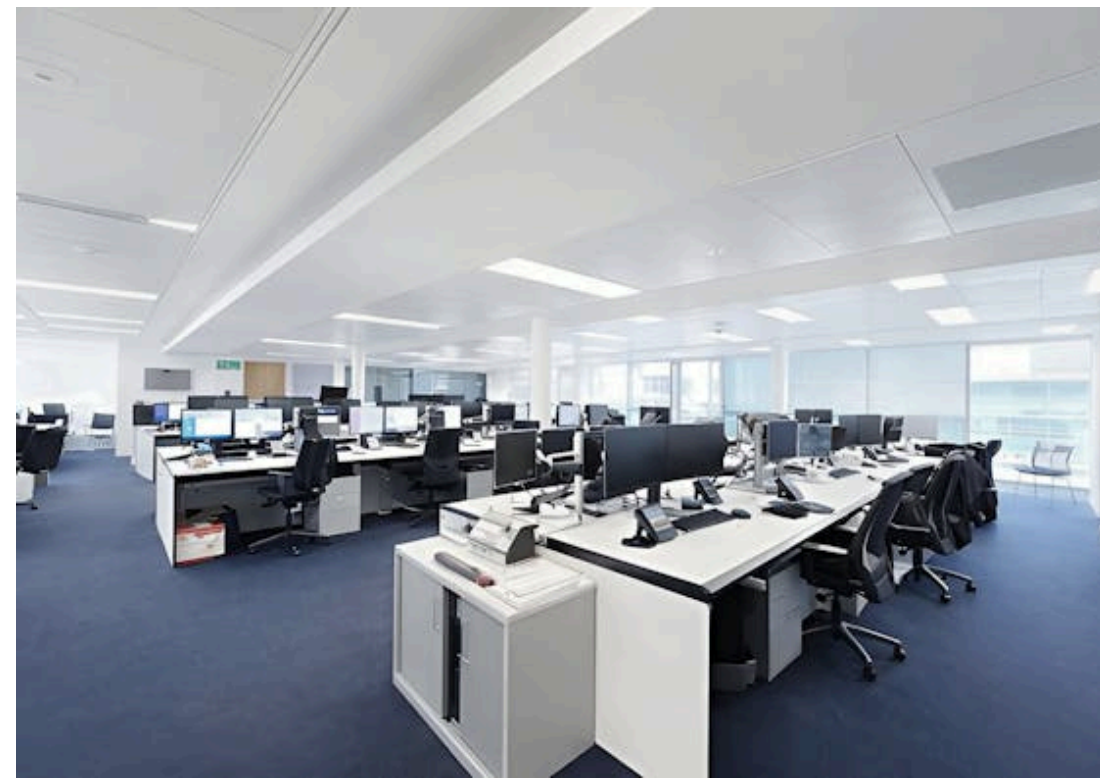
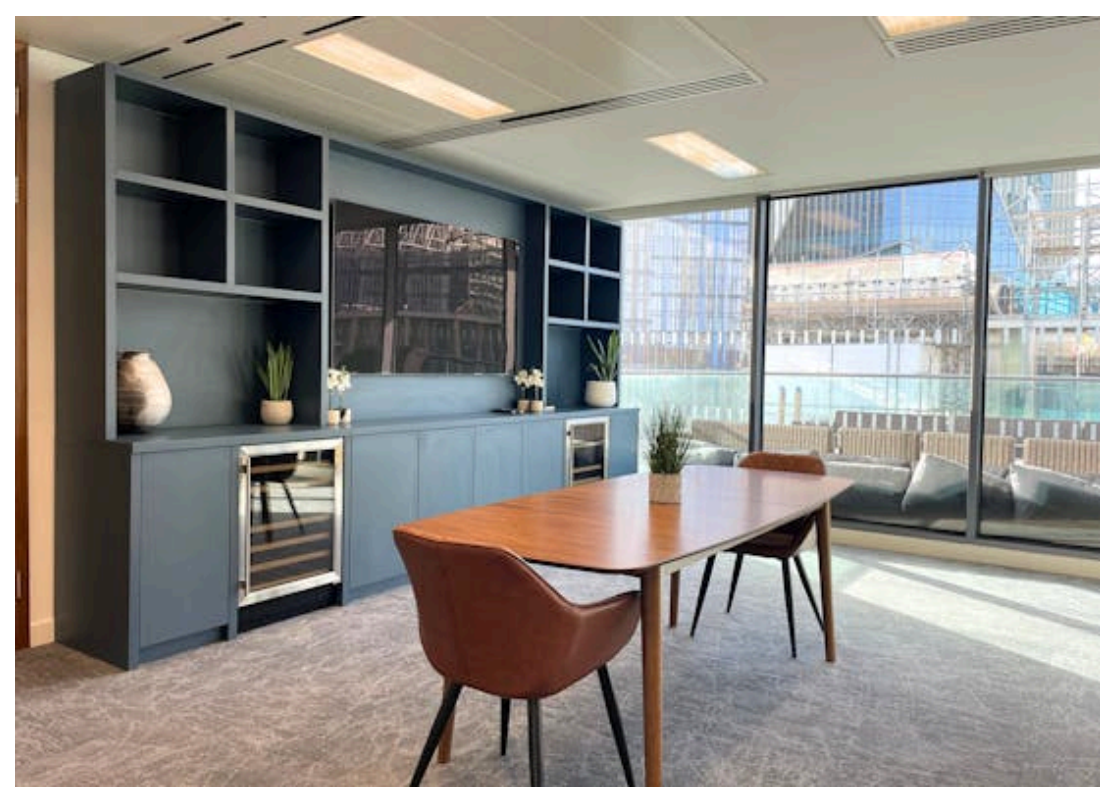
Liverpool Street  
(0.3 Miles)

Finwell House, 26 Finsbury Square, is well-located with excellent transport links. The closest stations are Moorgate (Northern, Circle, Hammersmith & City, and Metropolitan lines), Liverpool Street (Central, Circle, Hammersmith & City, Metropolitan lines and Elizabeth line), and Old Street (Northern line), all within a short walking distance.

020 7408 1114

[www.coh.eu](http://www.coh.eu)

# 26 FINSBURY SQUARE



# CROSSLAND OTTER HUNT

26 Finsbury Square,  
London,  
EC2A 1DS

---

Fitted Office Space with a Large  
Terrace

---

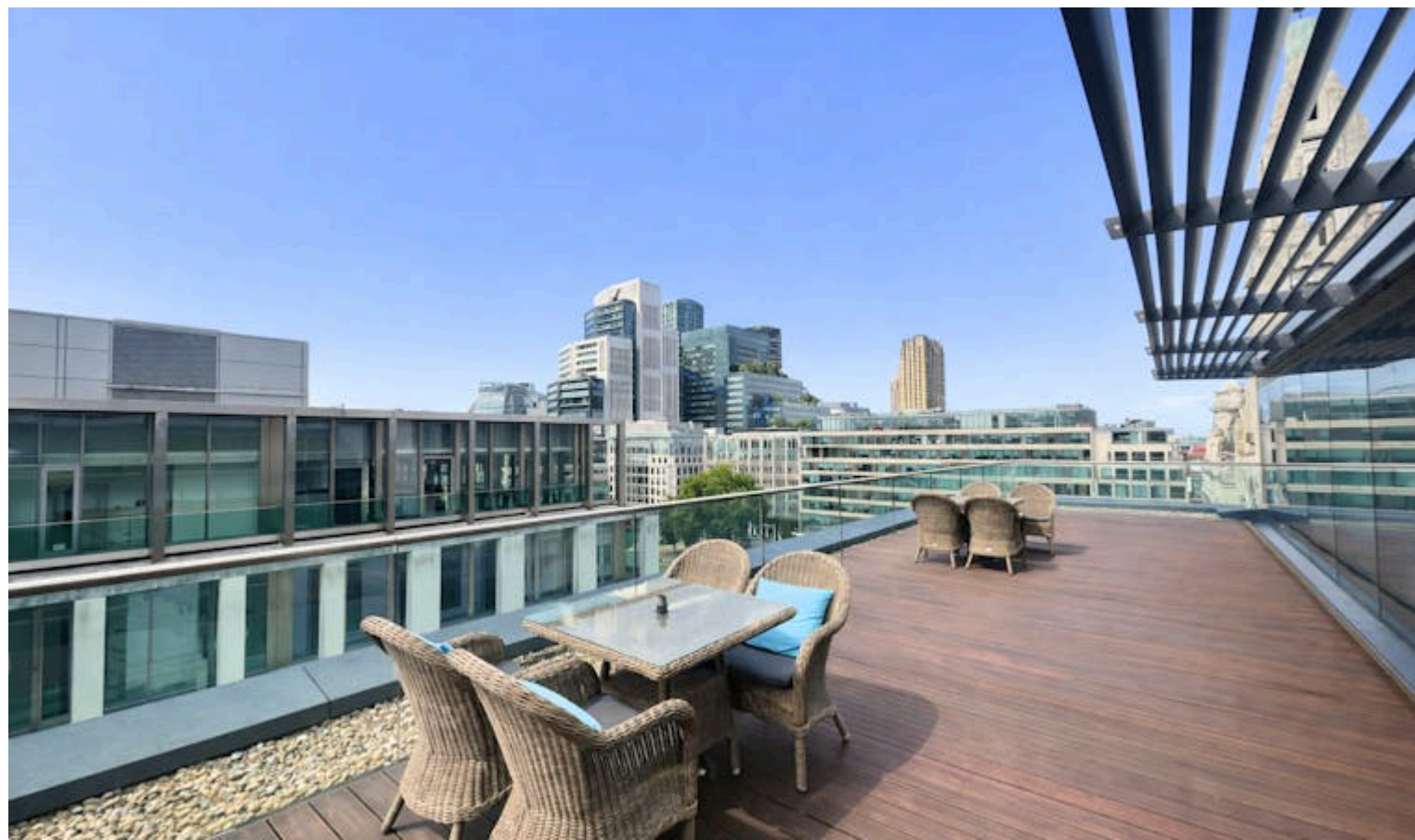
5,090 sq ft (472.88 sq m)

---

[View Online →](#)

---

020 7408 1114  
[www.coh.eu](http://www.coh.eu)



- Comfort Cooling
- Large Terrace
- Fully Raised Floor
- Manned Reception
- Refurbishment of the Ground Reception

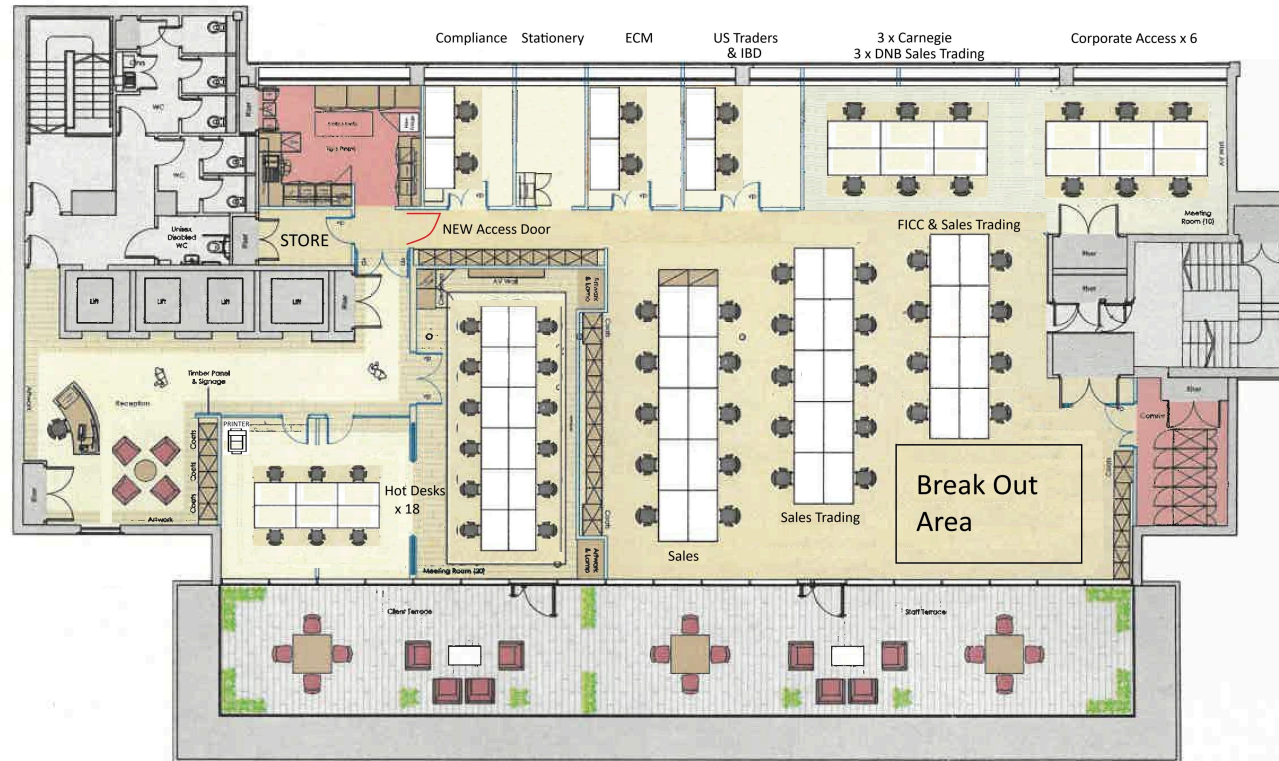
# Floor Plan

Carnegie /

26 Finsbury Square /

Ninth Floor /

Scale 1:100 @ A2 /



## Accommodation

The accommodation comprises the following areas:

NAME	SQ FT	SQ M	RENT (SQ FT)	RATES PAYABLE (SQ FT)	SERVICE CHARGE (SQ FT)	TOTAL YEAR	AVAILABILITY
9th	5,090	472.88	£67.50	£28.31	£12.99	£553,792	Available

# CROSSLAND OTTER HUNT

## CONTACT US



Richard Lockhart  
020 7399 2735 | 07780661096  
richard@coh.eu



Jack Hopkins  
020 7399 2743 | 07469 239056  
jack@coh.eu

020 7408 1114

[www.coh.eu](http://www.coh.eu)

## Description

The current layout includes a large boardroom, 4 smaller meeting rooms/exec office, a separate kitchen and breakout area, storage space, a large open-plan working area with 40 desks. The space features rows of linear LED lights and carpeted flooring. Additionally, the floor benefits from a very large terrace and good natural light.

## Location

Finwell House, 26 Finsbury Square, is well-located with excellent transport links. The closest stations are Moorgate (Northern, Circle, Hammersmith & City, and Metropolitan lines), Liverpool Street (Central, Circle, Hammersmith & City, Metropolitan lines and Elizabeth line), and Old Street (Northern line), all within a short walking distance.

## Terms

By way of assignment until February 2034, with a break option in February 2029.

## EPC

Upon enquiry

## ANTI MONEY LAUNDERING

The successful applicant will be required to provide two forms of ID and proof/source of funds, to satisfy anti-money laundering protocols.

# CROSSLAND OTTER HUNT

[www.coh.eu](http://www.coh.eu)



Visit Our Office  
3-5 Barrett Street  
London  
W1U 1AY