

CROSSLAND OTTER HUNT

25 Upper Brook Street,
London,
W1K7QD

Mayfair Penthouse Duplex to Let

4th and 5th Floors - 1,545 sq ft

Fully Furnished

1,545 sq ft (143.54 sq m)

020 7408 1114
www.coh.eu



CROSSLAND OTTER HUNT

25 Upper Brook Street,
London,
W1K7QD

Mayfair Penthouse Duplex to Let

4th and 5th Floors - 1,545 sq ft

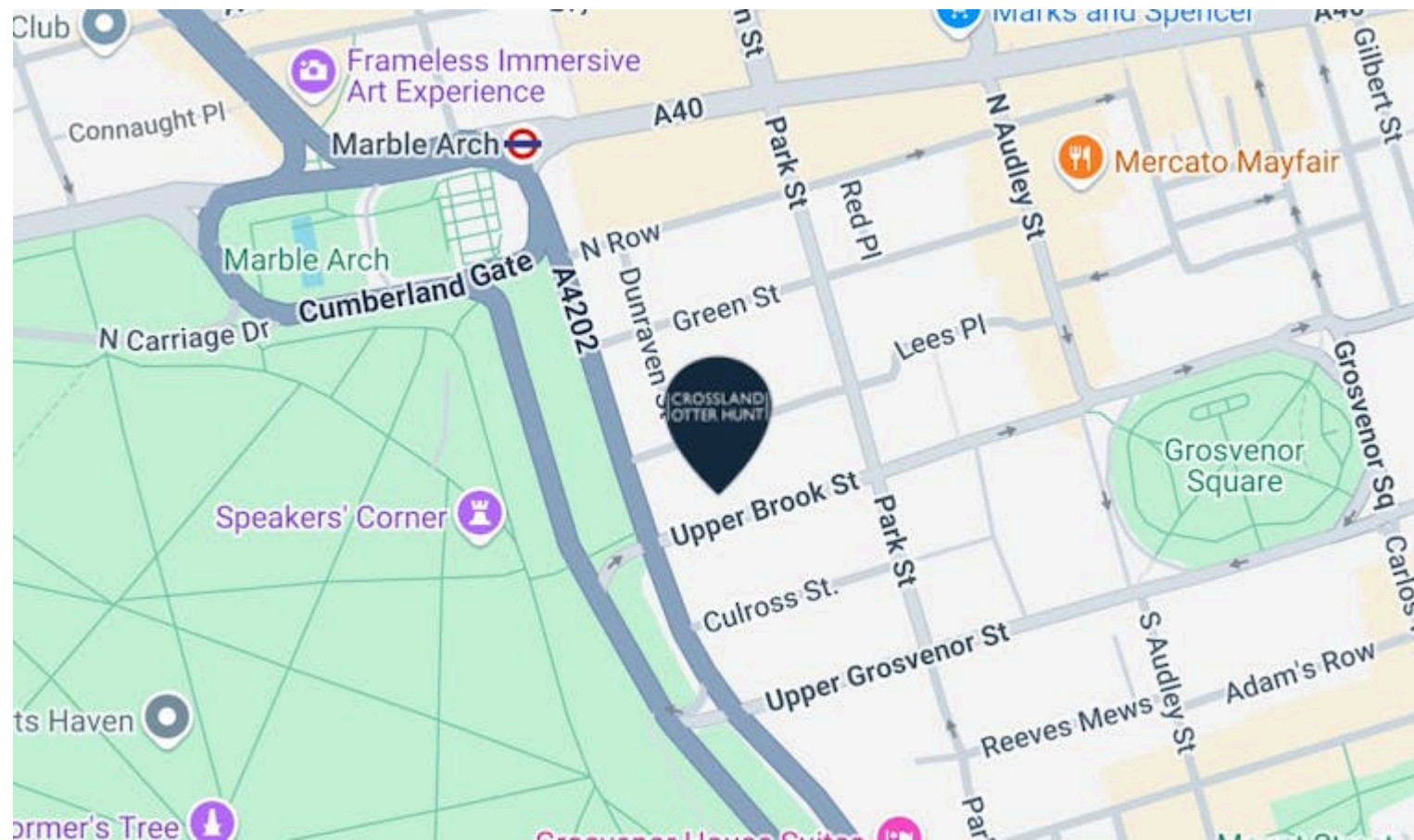
Fully Furnished

1,545 sq ft (143.54 sq m)

[View Online →](#)

020 7408 1114

www.coh.eu



Nearest Stations



Marble Arch
(0.2 Miles)

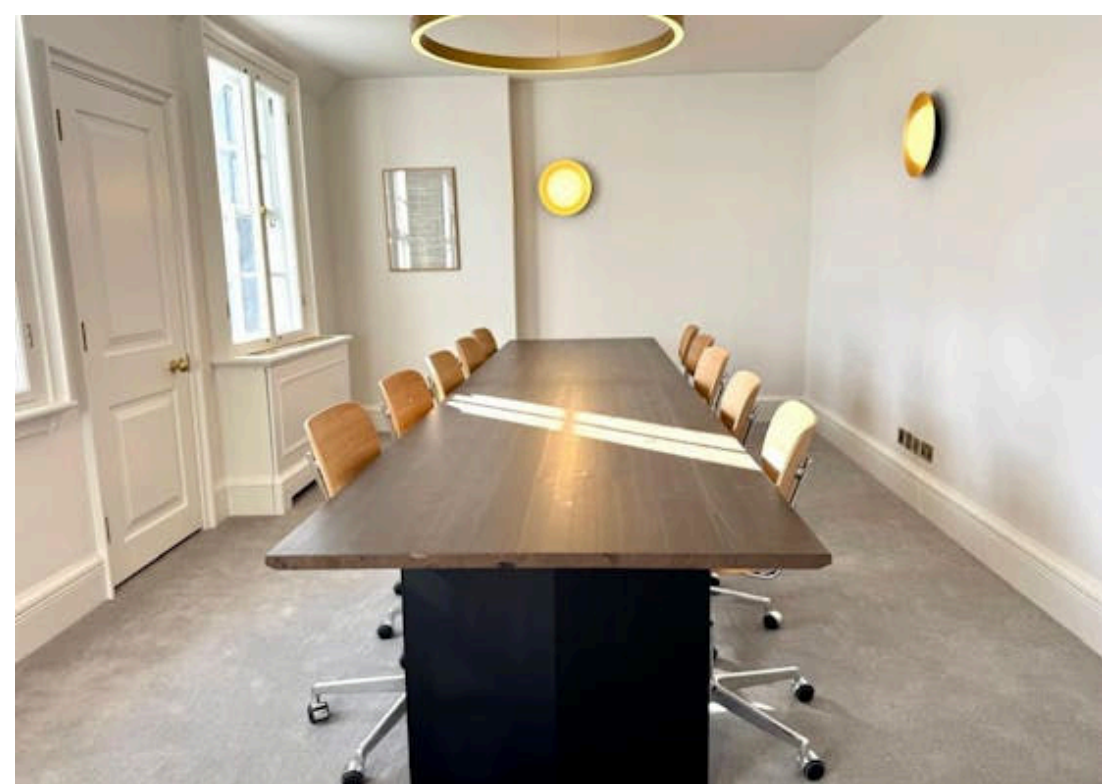
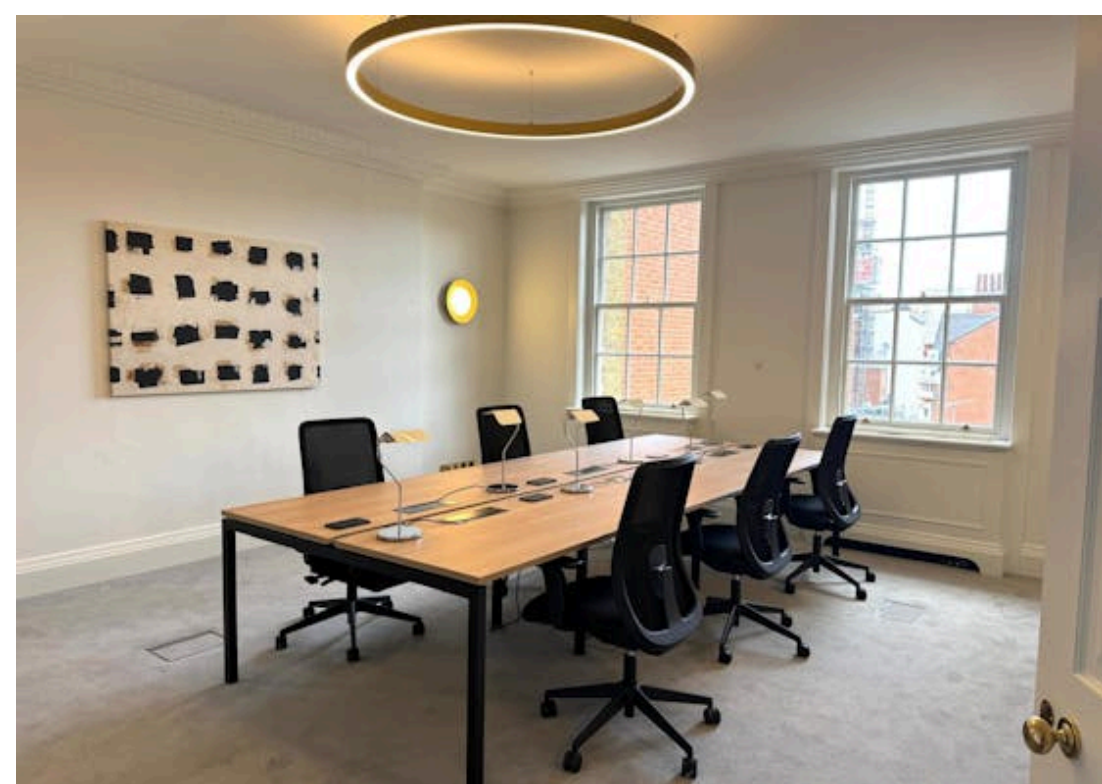


Bond Street
(0.3 Miles)



Hyde Park Corner
(0.6 Miles)

Upper Brook Street is a prestigious address in central Mayfair, positioned just off Park Lane and a short walk from both Marble Arch and Bond Street stations. The area benefits from world-class amenities, luxury hotels, fine dining, and excellent transport connectivity.



CROSSLAND OTTER HUNT

25 Upper Brook Street,
London,
W1K7QD

Mayfair Penthouse Duplex to Let

4th and 5th Floors - 1,545 sq ft

Fully Furnished

1,545 sq ft (143.54 sq m)

[View Online →](#)

020 7408 1114

www.coh.eu



- Grade II listed Mayfair Building
- Period detailing & characterful features
- Manned reception
- Close proximity to Hyde Park
- Recently refurbished & furnished throughout
- New contemporary lighting
- Passenger lift

Accommodation

The accommodation comprises the following areas:

NAME	SQ FT	RENT (SQ FT)	RATES PAYABLE (SQ FT)	SERVICE CHARGE (SQ FT)	TOTAL MONTH	AVAILABILITY
4th - 5th	1,545	£89.50	£52.82	£15.50	£20,319.33	Available
Total	1,545	£89.50	£52.82	£15.50	£20,319.33	

CROSSLAND OTTER HUNT

CONTACT US



Nick Sinclair

02073992733 | 07970511730

nick@coh.eu



Mathis Piquiot

07856686966

mathis@coh.eu

020 7408 1114

www.coh.eu

Description

Situated in the heart of Mayfair, 25 Upper Brook Street is a distinguished Grade II listed office building offering boutique workspace with period charm. The available 4th and 5th floor suites have recently undergone a comprehensive redecoration, blending contemporary finishes with the building's characterful architectural features. The suite is furnished throughout.

Location

Upper Brook Street is a prestigious address in central Mayfair, positioned just off Park Lane and a short walk from both Marble Arch and Bond Street stations. The area benefits from world-class amenities, luxury hotels, fine dining, and excellent transport connectivity.

EPC

B (46)

ANTI MONEY LAUNDERING

The successful applicant will be required to provide two forms of ID and proof/source of funds, to satisfy anti-money laundering protocols.

CROSSLAND OTTER HUNT

www.coh.eu



Visit Our Office
3-5 Barrett Street
London
W1U 1AY