

43 PALACE STREET

VICTORIA

2,802 to 5,915 sq ft of brand new contemporary fully fitted & furnished office space



CHARACTER & STYLE

Located a short walk from Victoria Station and Cardinal Place, 43 Palace Street offers 2,802 - 5,915 sq ft of best in class fully fitted office accommodation.

The property is undergoing a comprehensive refurbishment and will feature a brand new reception, new end-of-trip facilities and two brand new fitted floors complete with furniture.



Building reception





2ND FLOOR

The 2nd floor offers 3,113 sq ft of contemporary office space, providing 32 open plan desks. The floor also benefits from multiple meeting rooms and a kitchenette.



2nd floor boardrooms



2nd floor kitchenette



2nd floor workspace and reception



2nd floor reception



2nd floor kitchenette and workspace



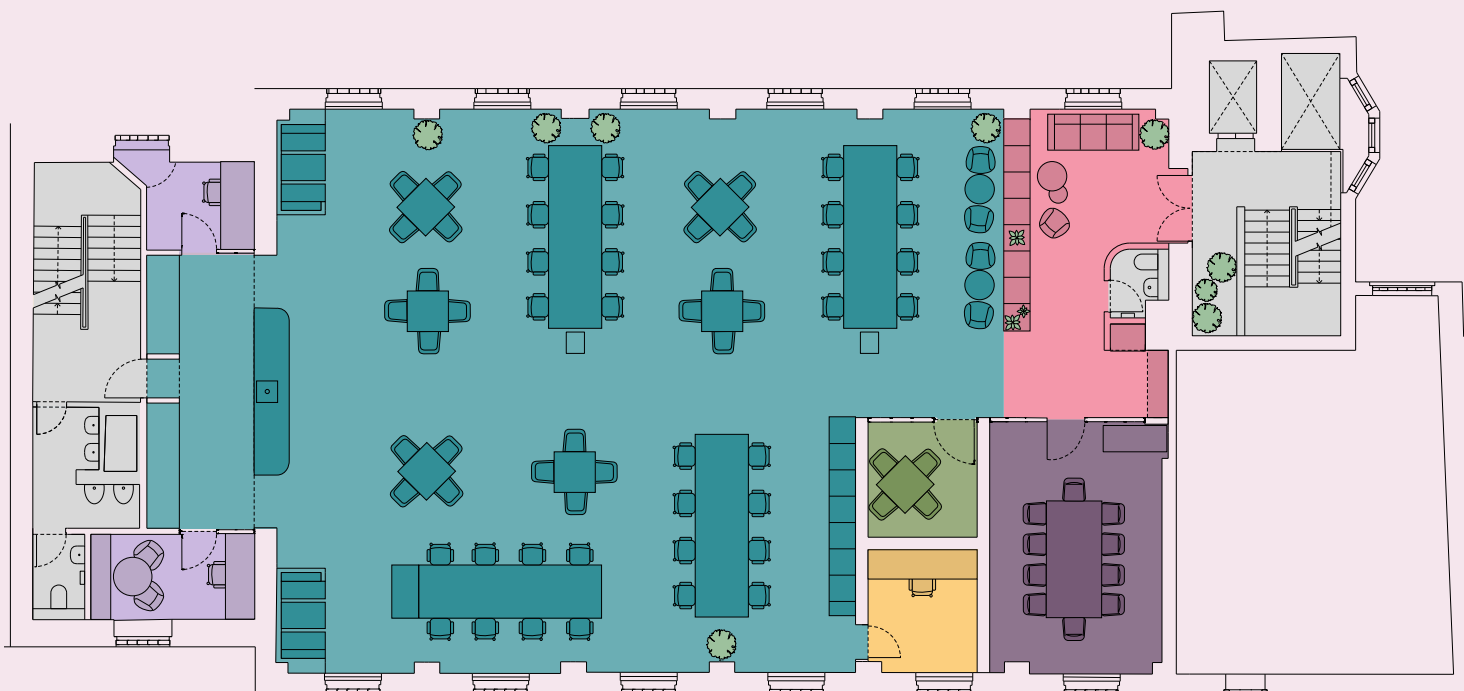
2nd floor booth



2ND FLOOR

3,113 SQ FT 289.2 SQ M

1 x Reception 32 x Open plan desks 24 x Breakout desks 2 x Booths 1 x Kitchenette 2 x Breakout areas
2 x Zoom rooms 1 x Executive office 1 x Meeting room 1 x Boardroom



WILFRED STREET

PALACE STREET



*Indicative only. Not to scale

● Reception ● Office ● Core ● Meeting room ● Zoom room ● Boardroom ● Executive office



3RD FLOOR

The 3rd floor offers 2,802 sq ft of contemporary office space, providing 34 open plan desks. This floor also benefits from a range of meeting rooms and a kitchenette.



3rd floor workspace



3rd floor booths & kitchenette



3rd floor meeting room



3rd floor kitchenette and workspace



3rd floor reception



3RD FLOOR

2,802 SQ FT 260.3 SQ M

1 x Reception 34 x Open plan desks 16 x Breakout desks 2 x Booths 1 x Kitchenette
1 x Zoom room 1 x Executive office 1 x Meeting room 1 x Boardroom



*Indicative only. Not to scale

● Reception ● Office ● Core ● Meeting room ● Zoom room ● Boardroom ● Executive office



HIGHLIGHTS



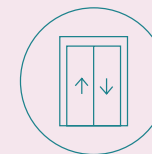
Newly refurbished
reception



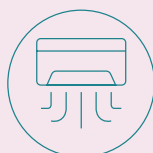
Fully fitted & furnished
office floors



New end-of-trip
facilities with 4 showers
and bike storage



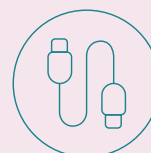
Passenger lift



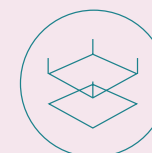
New air-conditioning



Demised WC's



Fully cabled &
active fibre line



Raised floors



BUZZING VICTORIA

Located moments from Buckingham Palace, this prime location offers a vibrant mix of cafés, restaurants, and retail at Cardinal Place and Nova.

Nearby Belgravia adds to the appeal with the prestigious Elizabeth Street and Eccleston Yards, known for their exceptional shopping and dining.

With Victoria and St. James's Park stations just minutes away, enjoy seamless access to the Underground, National Rail, and coach services.



Eccleston Yards



Buckingham Green



St James's Park



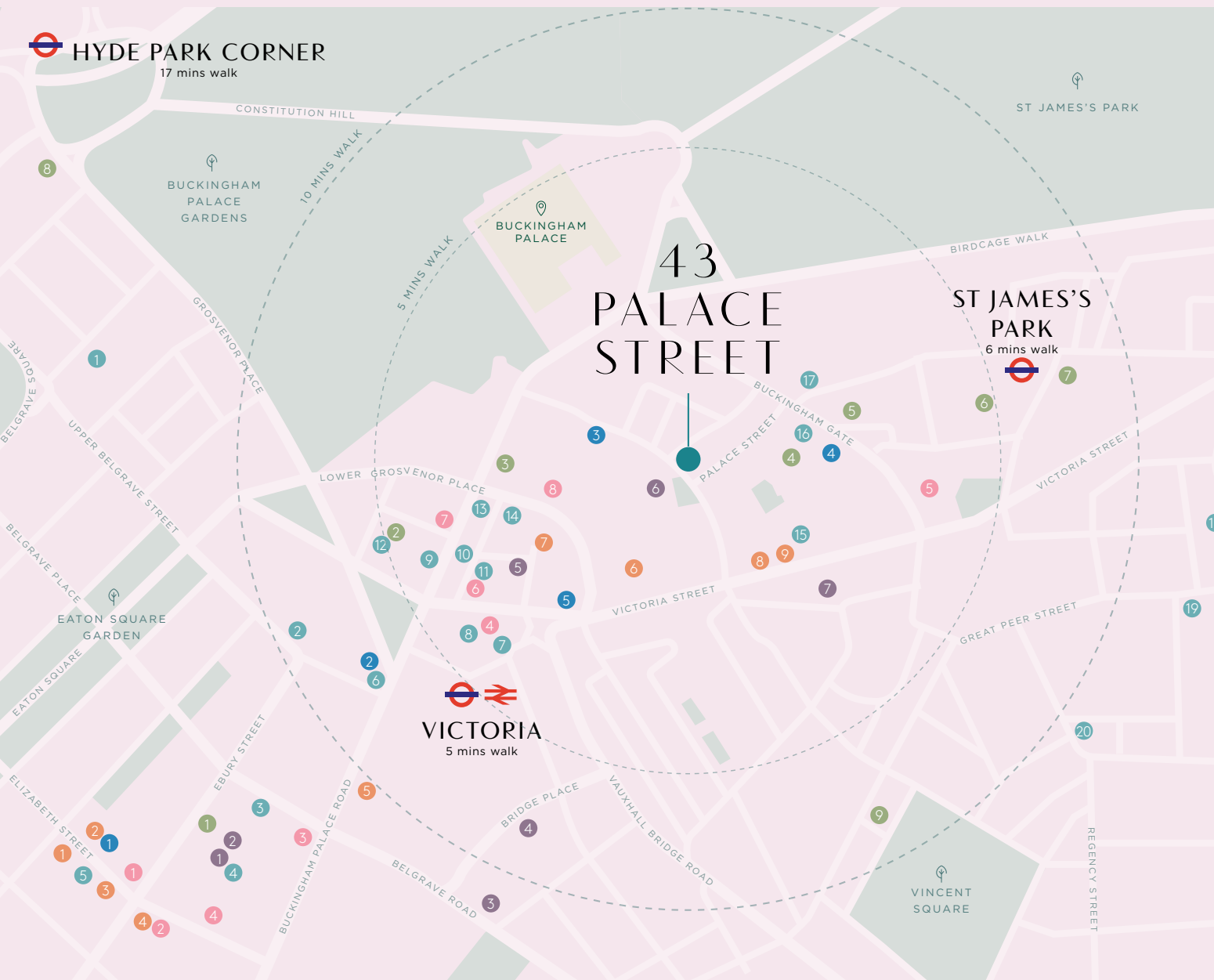
Nova



Cardinal Place



The Goring Hotel



- RESTAURANTS
- 1. Muse by Tom Aikens
- 2. Olivomare
- 3. Boisdale of Belgravia
- 4. The Jones Family Kitchen
- 5. Oliveto
- 6. Harry's
- 7. Flat Iron
- 8. Market Halls Victoria
- 9. Pizza Pilgrims
- 10. Nova Food Court
- 11. Casa Do Frango
- 12. The Goring Dining Room
- 13. Timmy Green
- 14. Bone Daddies
- 15. The Ivy
- 16. Quilon
- 17. Bon Gusto
- 18. The Cinnamon Club
- 19. Ma La Sichuan
- 20. El Dionis

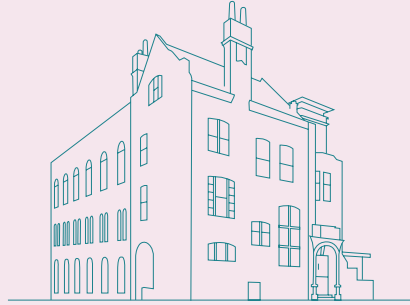
- HOTELS
- 1. The Lord Milner
- 2. The Goring
- 3. Hotel 41
- 4. Taj 51
- 5. The Guardsman
- 6. St.Ermin's
- 7. Conrad
- 8. The Peninsula
- 9. The Wellington

- BARS
- 1. The Thomas Cubitt
- 2. The Alchemist
- 3. The Phoenix
- 4. The Hamptons Bar
- 5. Pavlova's

- CAFÉS
- 1. Tomtom Coffee House
- 2. Chestnut Bakery
- 3. Joe & The Juice
- 4. Black Sheep Coffee
- 5. Formative Coffee
- 6. Ole & Steen
- 7. Gail's
- 8. Pret a Manger

- RETAIL & LEISURE
- 1. Les Senteurs
- 2. Jeroboams
- 3. ME+EM
- 4. Bayley & Sage
- 5. Victoria Place
- 6. Cardinal Place
- 7. Flight Club
- 8. LANE7
- 9. BAM Karaoke

- GYMS
- 1. Hot Pod Yoga
- 2. Barry's
- 3. Manor
- 4. FRAME
- 5. 1Rebel
- 6. City Athletic
- 7. Gymbox



43 PALACE STREET

VICTORIA



SCOTT FISHER
sfisher@tuckerman.co.uk
07890 572 225

GUY BOWRING
gbowring@tuckerman.co.uk
07831 185 728

PHIL FRENAY
phil@coh.eu
07818 566 174

NICK SINCLAIR
nick@coh.eu
07970 511 730

JAMIE CHRISTIAN
jchristian@tuckerman.co.uk
07561 852 667

CHARLOTTE STEELE
charlotte@coh.eu
07503 625 481

Important notice relating to the Misrepresentation Act 1967 and the Property Misdescriptions Act 1991: (i) the particulars are set out as a general outline only for guidance of intending purchasers or lessees and do not constitute, nor constitute part of, an offer or contract (ii) all descriptions, dimensions, references to condition and necessary permission for use and occupation, and other details are given in good faith and are believed to be correct, but any intending purchasers or occupiers should not rely on them as statements or representations of fact, but must satisfy themselves by inspection or otherwise as to the correctness of each of them. March 2026