

# CROSSLAND OTTER HUNT

24 Upper Brook Street,  
London,  
W1K 7QB

---

Fully Fitted Boutique Mayfair  
Accommodation

4th Floor - 1,080 sq ft

---

1,080 sq ft (100.34 sq m)



020 7408 1114

[www.coh.eu](http://www.coh.eu)

# CROSSLAND OTTER HUNT

24 Upper Brook Street,  
London,  
W1K 7QB

Fully Fitted Boutique Mayfair  
Accommodation

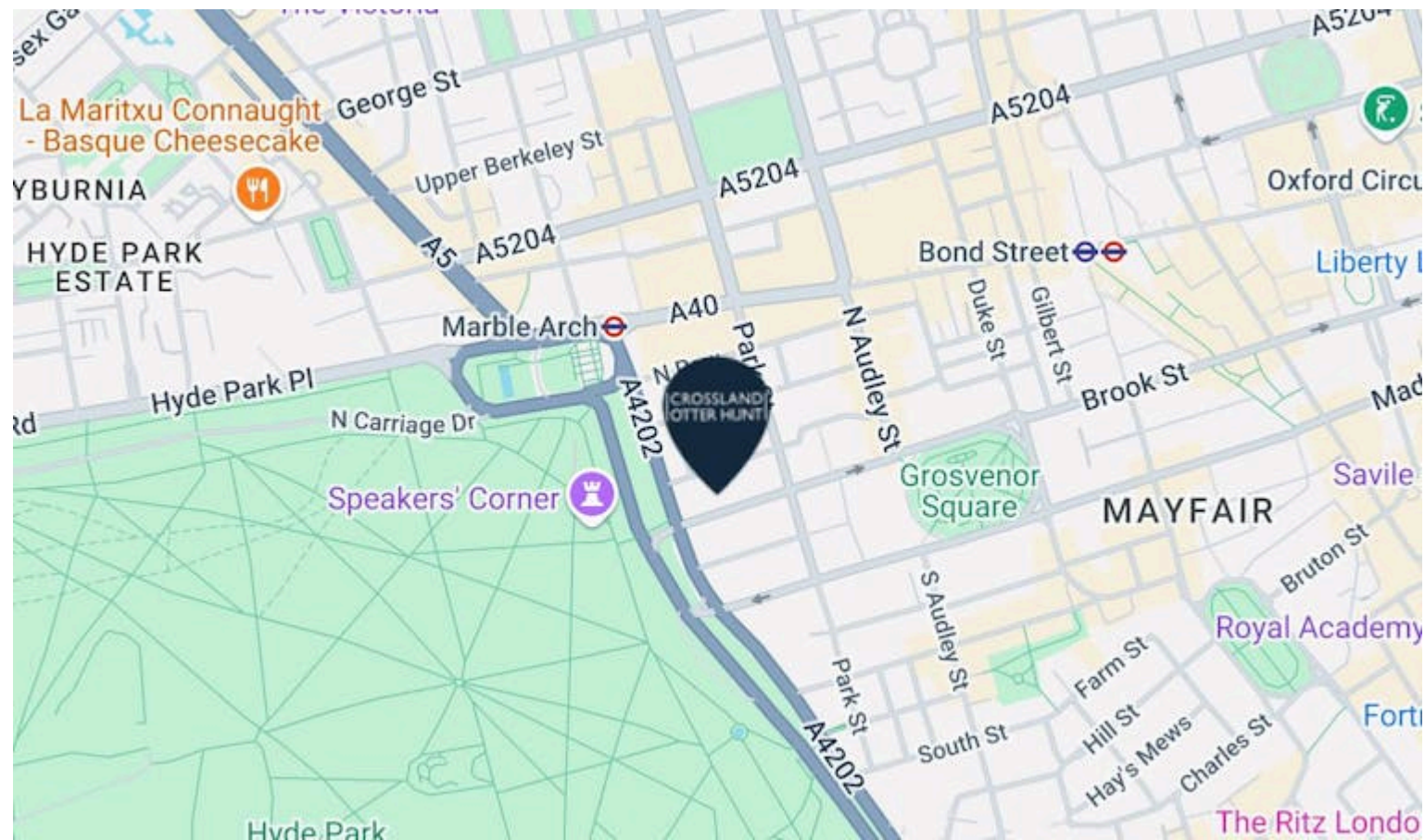
4th Floor - 1,080 sq ft

1,080 sq ft (100.34 sq m)

[View Online →](#)

020 7408 1114

[www.coh.eu](http://www.coh.eu)



## Nearest Stations



Marble Arch  
(0.2 Miles)

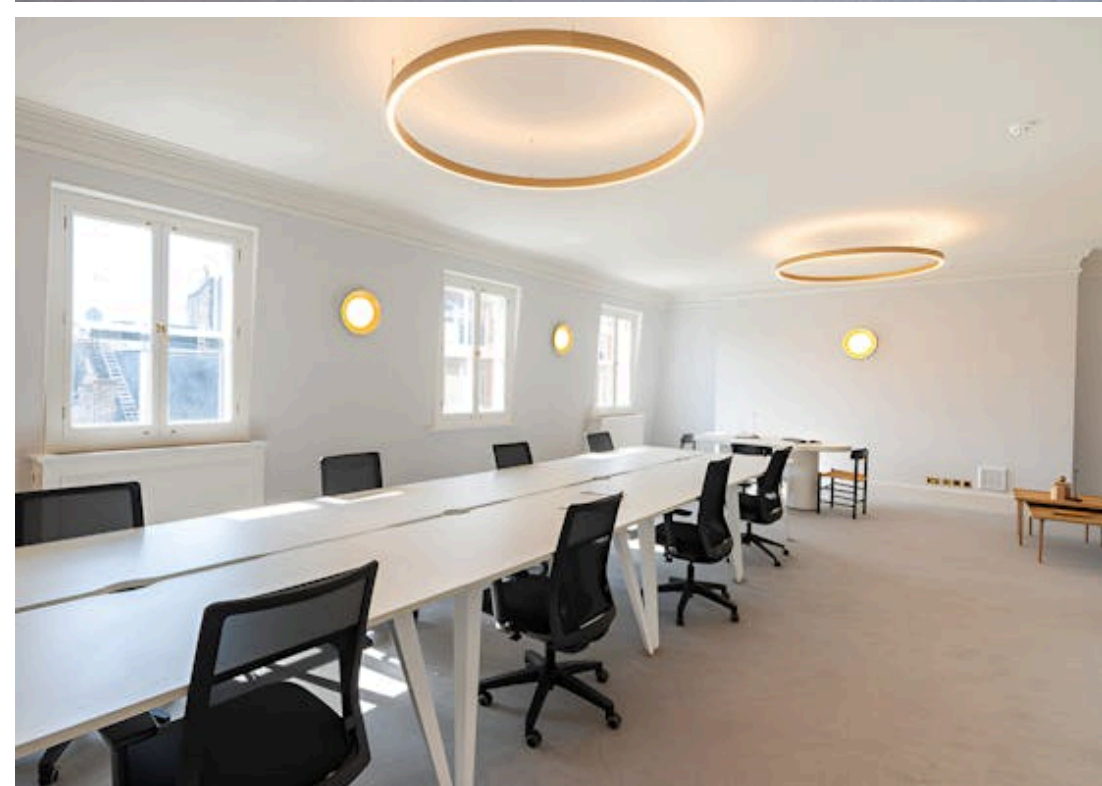
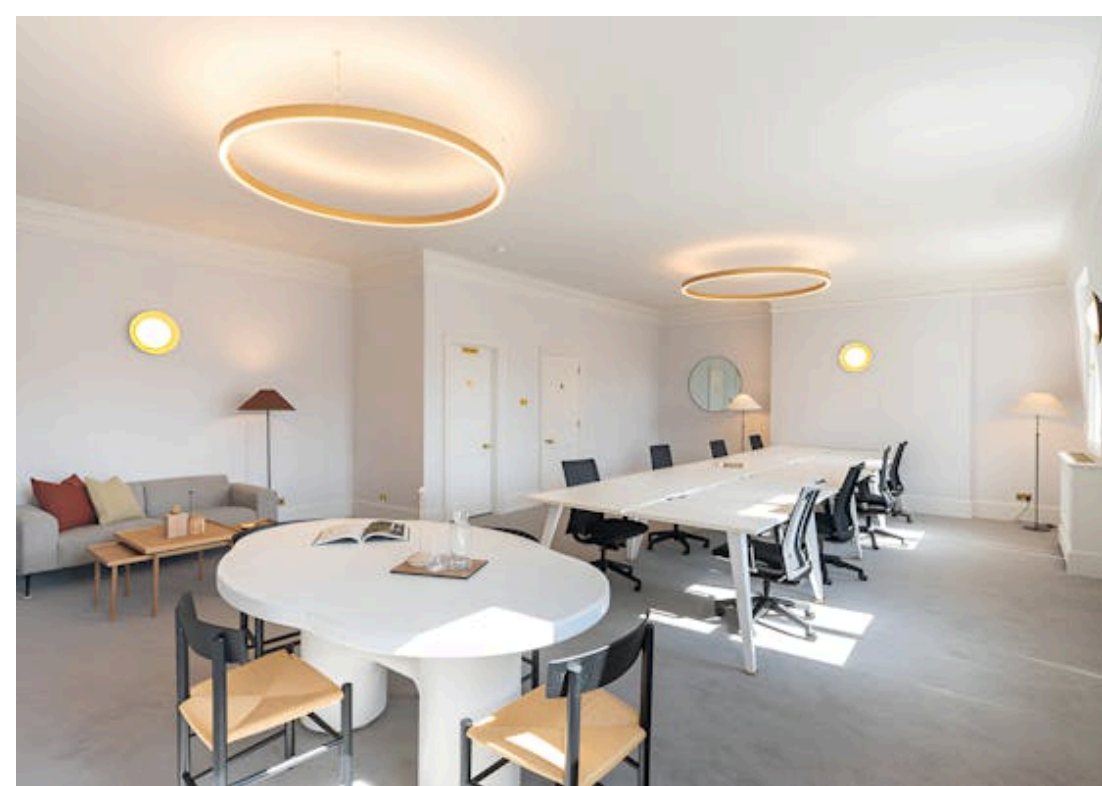


Bond Street  
(0.3 Miles)



Hyde Park Corner  
(0.6 Miles)

The property is located on the north side of Upper Brook Street between Park Lane and Grosvenor Street in the heart of Mayfair. Marble Arch (Central line) and Bond Street (Elizabeth, Central and Jubilee line) underground stations are within a short walk with several public car parks nearby.



# CROSSLAND OTTER HUNT

24 Upper Brook Street,  
London,  
W1K 7QB

---

Fully Fitted Boutique Mayfair  
Accommodation

---

4th Floor - 1,080 sq ft

---

1,080 sq ft (100.34 sq m)

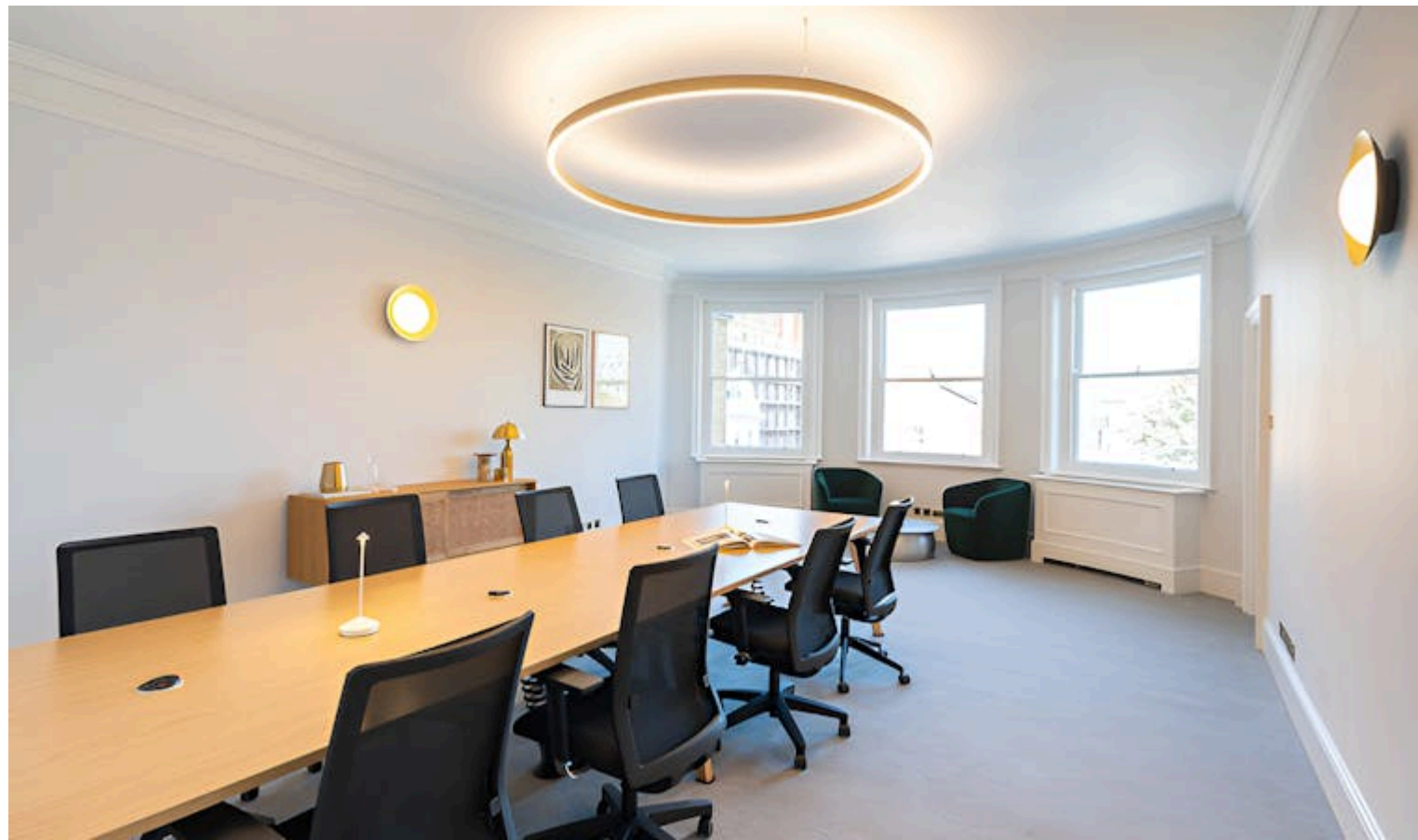
---

[View Online →](#)

---

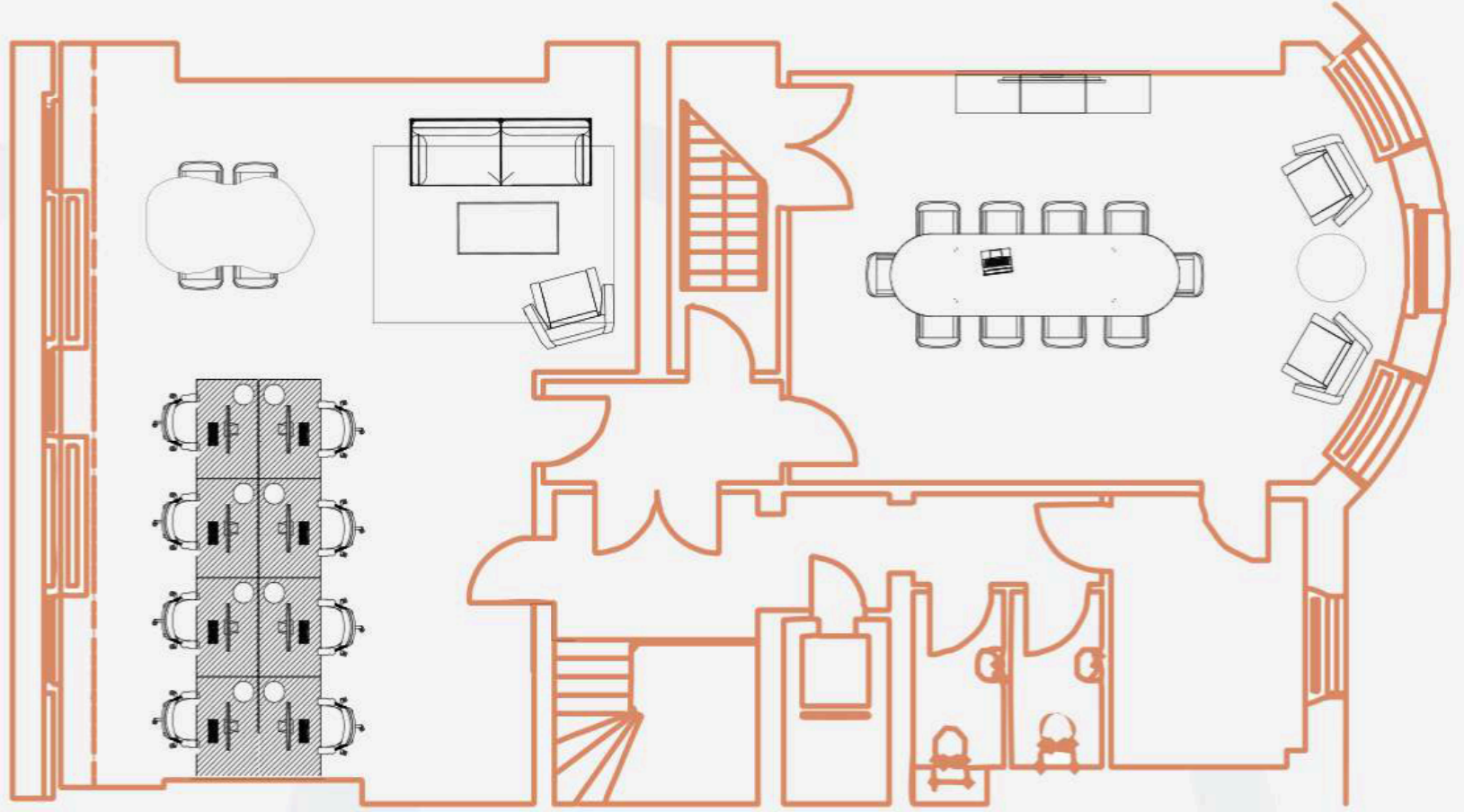
020 7408 1114

[www.coh.eu](http://www.coh.eu)



- Newly refurbished
- Air cooling
- Commissionaire
- Showers & towel service
- Furnished throughout
- G Network in situ
- Shared use of the building gym
- Bike racks

Upper Brook Street



## Accommodation

The accommodation comprises the following areas:

NAME	SQ FT	SQ M	RENT (SQ FT)	RATES PAYABLE (SQ FT)	SERVICE CHARGE (SQ FT)	TOTAL YEAR
4th	1,080	100.34	£89.50	£47.12	£15.50	£164,289.60

---

# CROSSLAND OTTER HUNT

## CONTACT US



Nick Sinclair

02073992733 | 07970511730

nick@coh.eu



Charlotte Steele

020 7408 1114 | 07503625481

charlotte@coh.eu

020 7408 1114

www.coh.eu

## Description

The accommodation is located on the fourth floor and has been furnished throughout. The suite benefits from high ceilings, period features, excellent natural light and stunning views over Mayfair. There is use of a gym, with personal trainer available, together with towel service, shower facilities.

## Location

The property is located on the north side of Upper Brook Street between Park Lane and Grosvenor Street in the heart of Mayfair. Marble Arch (Central line) and Bond Street (Elizabeth, Central and Jubilee line) underground stations are within a short walk with several public car parks nearby.

## Viewings

Strictly through the sole agents, Crossland Otter Hunt.

## Terms

Available by way of a new lease.

## EPC

C

## ANTI MONEY LAUNDERING

The successful applicant will be required to provide two forms of ID and proof/source of funds, to satisfy anti-money laundering protocols.

# CROSSLAND OTTER HUNT

[www.coh.eu](http://www.coh.eu)



Visit Our Office  
3-5 Barrett Street  
London  
W1U 1AY