

# CROSSLAND OTTER HUNT

7 Lower Grosvenor Place,  
London,  
SW1W 0EN

---

Economical Bright Furnished Offices  
To Let close to Victoria  
625 sq ft

---

625 sq ft (58.06 sq m)



020 7408 1114

[www.coh.eu](http://www.coh.eu)

# CROSSLAND OTTER HUNT

7 Lower Grosvenor Place,  
London,  
SW1W 0EN

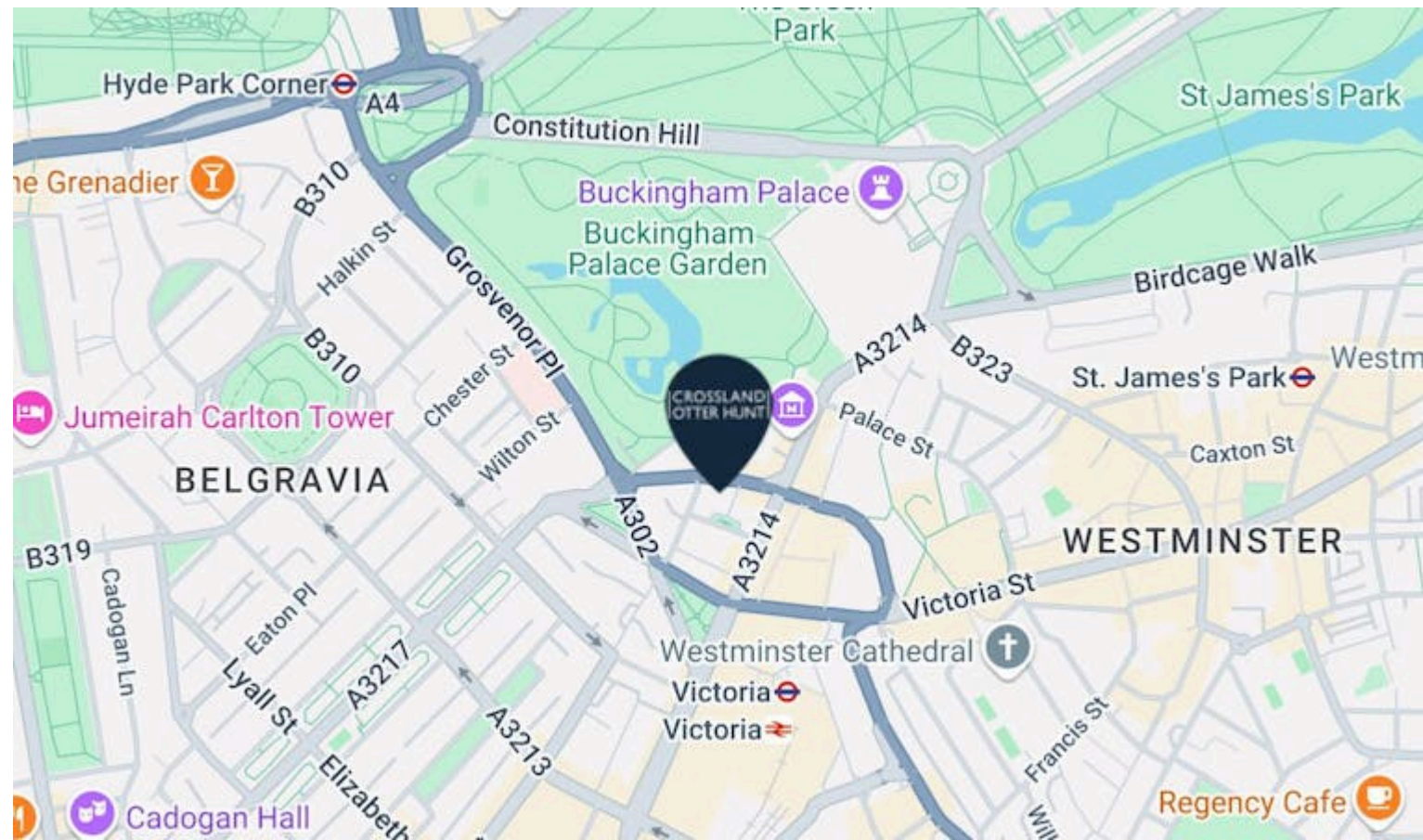
Economical Bright Furnished Offices  
To Let close to Victoria  
625 sq ft

625 sq ft (58.06 sq m)

[View Online →](#)

020 7408 1114

[www.coh.eu](http://www.coh.eu)



## Nearest Stations



Victoria  
(0.1 Miles)

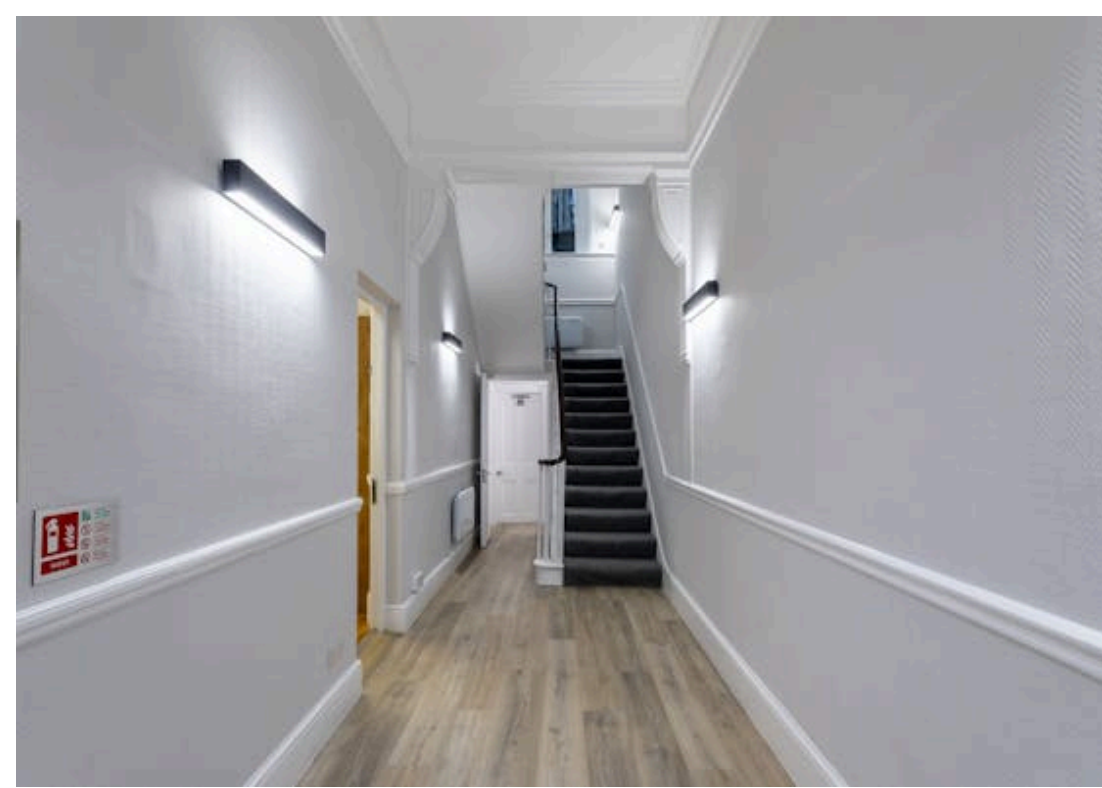


Hyde Park Corner  
(0.4 Miles)



St. James's Park  
(0.5 Miles)

This prominent building is located at the junction of Beeston Place, very close to all the amenities that surround Victoria Rail terminals.



# CROSSLAND OTTER HUNT

7 Lower Grosvenor Place,  
London,  
SW1W 0EN

---

Economical Bright Furnished Offices  
To Let close to Victoria  
625 sq ft

---

625 sq ft (58.06 sq m)

---

[View Online →](#)

---

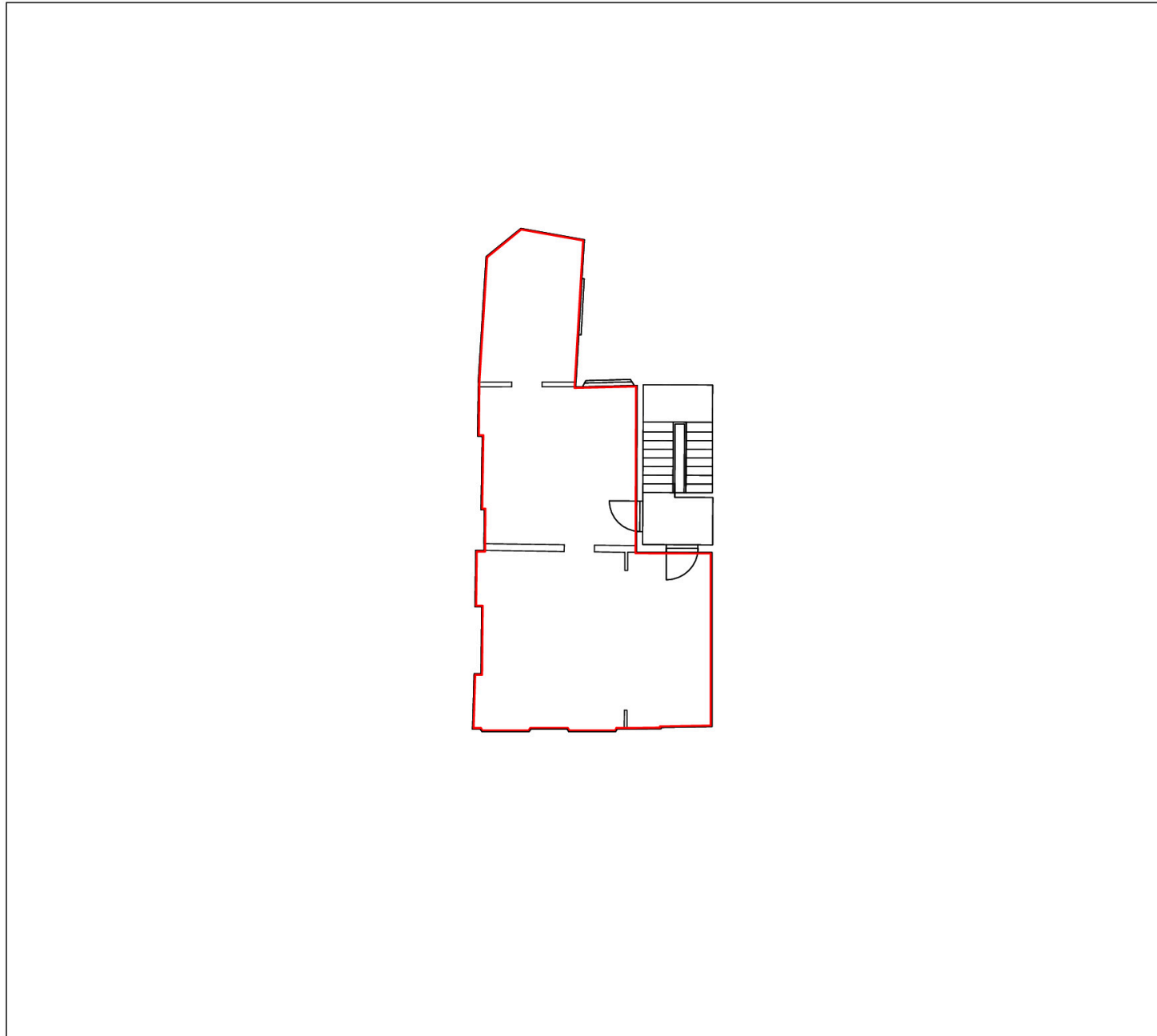
020 7408 1114

[www.coh.eu](http://www.coh.eu)



- Common Areas to be Refurbished
- Period Features
- Shared Kitchen
- Shower
- Offices to be Refurbished
- Excellent Natural Light
- Good Ceiling Heights
- Fibre

2nd fl plan



## Accommodation

The accommodation comprises the following areas:

NAME	SQ FT	RENT (SQ FT)	RATES PAYABLE (SQ FT)	SERVICE CHARGE (SQ FT)	TOTAL MONTH	TOTAL YEAR	AVAILABILITY
2nd	625	£37.50	£20.39	£12.73	£3,678.13	£44,137.50	Available

---

# CROSSLAND OTTER HUNT

## CONTACT US



Nick Sinclair

02073992733 | 07970511730

nick@coh.eu



Phil Frenay

02073992742 | 07818566174

phil@coh.eu



Mathis Piquiot

07856686966

mathis@coh.eu

## JOINT AGENTS

Guy Bowring (Tuckerman)

07831 185 728

Scott Fisher (Tuckerman)

07890 572225

020 7408 1114

www.coh.eu

## Description

The available office is located on the 2nd floor of this attractive building close to Victoria Station. The floor is configured as 3 interlinking rooms with natural light from the front and rear. On the lower ground floor there is a large communal kitchen and a shower.

## Location

This prominent building is located at the junction of Beeston Place, very close to all the amenities that surround Victoria Rail terminals.

## EPC

Upon enquiry

## ANTI MONEY LAUNDERING

The successful applicant will be required to provide two forms of ID and proof/source of funds, to satisfy anti-money laundering protocols.

# CROSSLAND OTTER HUNT

[www.coh.eu](http://www.coh.eu)



Visit Our Office  
3-5 Barrett Street  
London  
W1U 1AY