



4 Fitzhardinge Street, London, W1H 6EG

4th Floor - 702 sq ft

- High quality, period office space
- Comfort cooling
- Manned reception
- WCs
- Refurbished
- Floor wired
- Kitchen
- Shower

4 Fitzhardinge Street

London, W1H 6EG

CROSSLAND
OTTER HUNT



Summary

Available Size	702 sq ft / 65.22 sq m
Rent	£45,000 per annum
Service Charge	£9,000 per annum
EPC	Upon enquiry

Description

The available accommodation, accessed by way of an attractive entrance hall and staircase, is located on the fourth floor of this period mid-terraced building.

The fourth floor provides open-plan accommodation, with excellent natural light throughout.

A kitchen, WCs and shower are located on the floor also.

Location

The property is situated on the north side of the street which runs between Portman Square and Manchester Square. Bond Street underground station (Central and Jubilee lines) and Baker Street underground station (Jubilee, Bakerloo, Metropolitan, Circle and Hammersmith & City lines) are both within easy walking distance.

Accommodation

The accommodation comprises of the following

Name	sq ft	sq m	Rent (sq ft)	Rates Payable (sq ft)	Service Charge (sq ft)	Total year	Availability
4th	702	65.22	£64.10	£25.64	£12.82	£72,000	Available
Total	702	65.22	£64.10	£25.64	£12.82	£72,000	

Terms

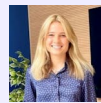
Offered on a new effective FRI lease for a term to be agreed



Nick Sinclair

02073992733 | 07970511730

nick@coh.eu



Charlotte Steele

020 7408 1114 | 07503625481

charlotte@coh.eu