



22 Newman Street, London, W1T 1PH

Contemporary air-cooled office accommodation in the heart of Fitzrovia

4th Floor - 1,042 sq ft

- Air cooling
- Kitchenette
- Benefitting from lots of natural light
- Roof lights
- Newly refurbished
- Lift Access

22 Newman Street

London, W1T 1PH



Summary

Available Size	1,042 sq ft / 96.80 sq m
Rent	£69.50 per sq ft
Rateable Value	£50,000
Service Charge	£6.80 per sq ft
EPC	Upon enquiry

Description

The fourth floor has been refurbished to provide contemporary new air cooled office accommodation, benefiting from an excellent floor-to-ceiling height. The accommodation is open plan and boasts an abundance of natural light.

Location

The property is located on the East side of Newman Street, equidistant between Oxford Street and Goodge Street. Oxford Circus, Tottenham Court Road and Goodge Street stations are located a short walk away, providing easy access to numerous tube lines. Tottenham Court Road, the nearest station, provides access to the new Elizabeth line.

Accommodation

The accommodation comprises of the following

Name	sq ft	sq m	Availability
4th	1,042	96.80	Available
Total	1,042	96.80	

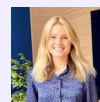
Specification

PLEASE CHECK PARTICULARS FOR FULL PRICING AS RATES & SERVICE CHARGES APPLY



Richard Lockhart

020 7399 2735 | 07780661096
richard@coh.eu



Charlotte Steele

020 7408 1114 | 07503625481
charlotte@coh.eu



Jessica Flather

020 7399 2743 | 07787296201
jessica@coh.eu