



## 30 King Street, London, EC2V 8EH

Newly refurbished office with views over the City skyline

6th Floor - 4,316 sq ft

- View over the City skyline
- Metal lined suspended ceilings and recessed light fittings
- Bike storage, showers & changing facilities
- Full access metal raised floor
- 2 x passenger lifts
- Male, Female & disabled WC's

# 30 King Street

London, EC2V 8EH

CROSSLAND  
OTTER HUNT



## Summary

Available Size	4,316 sq ft / 400.97 sq m
Rent	£67.50 per sq ft
Rates Payable	£22.90 per sq ft based on 2023 valuation
Service Charge	£15.40 per sq ft
EPC	Upon Enquiry

## Description

The accommodation has been refurbished to provide a Cat A offering. Windows on either side of the floor provide an abundant level of natural light and views over the City skyline. There are bike racks, lockers and shower amenities within the building.

## Location

The property is located on the west side of King Street close to its junction with Cheapside. St Pauls (Central Line) and Bank (numerous Lines) Underground stations are close by with numerous bus routes to the West End.

## Accommodation

The accommodation comprises the following areas:

Name	sq ft	sq m	Availability
6th	4,316	400.97	Available
<b>Total</b>	<b>4,316</b>	<b>400.97</b>	

## Viewings

All viewings to be arranged via the sole letting agents, Crossland Otter Hunt.

## Terms

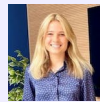
Available by way of a new lease direct from the freeholder.



### Richard Lockhart

020 7399 2735 | 07780661096

richard@coh.eu



### Charlotte Steele

020 7408 1114 | 07503625481

charlotte@coh.eu