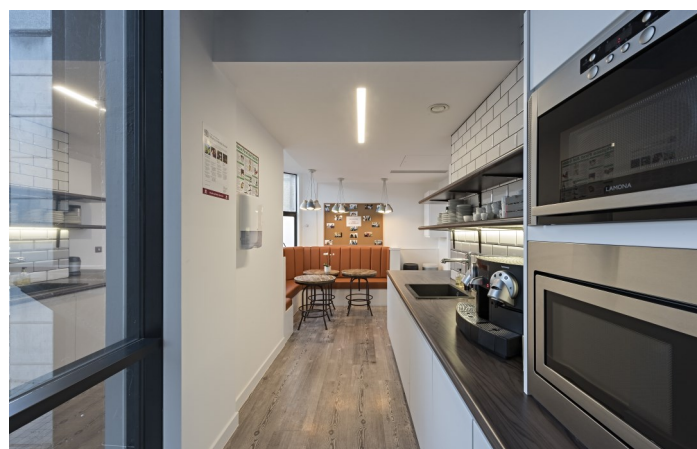


54 Jermyn Street, London SW1

1,858 sq ft (173 sq m)



- 4 private offices
- 2 x 7-person passenger lifts
- 100 MB fibre
- Shower
- Commissionaire
- Kitchenette
- Air conditioning
- Comfort cooled
- Raised floor

54 Jermyn Street, London SW1

Location

The building is located on one of St James's most prominent streets close to the junction with St James's Street. Transport links are excellent with Green Park (jubilee, Victoria and Piccadilly Lines) and Piccadilly (Piccadilly and Bakerloo lines) are both a short walk away.

Description

The available accommodation is located on the part 5th floor (1,858 sq ft). The office benefits from 4 private offices, a kitchenette and open plan working area. The high-quality office accommodation has large windows overlooking Jermyn Street and a shared shower on the floor.

Lease

Sublease available to 27th February 2024.

Rent

£92.50 per sq ft. .

Rates

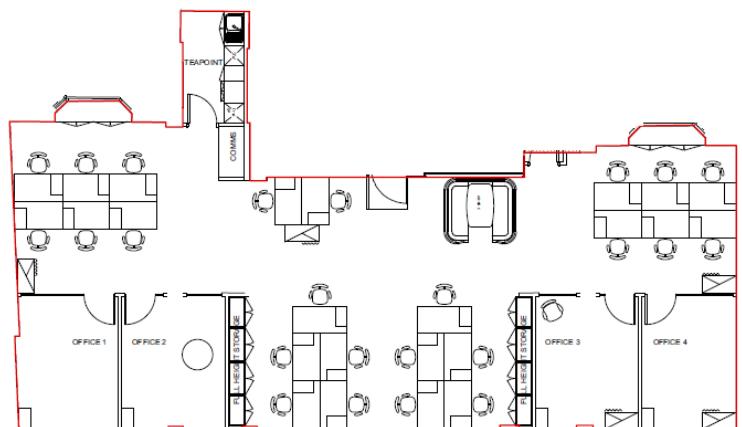
£30.92 per sq ft. Interested parties are advised to make their own enquiries.

Service Charge

£11.27 per sq ft

EPC

Upon enquiry.



For further information or to
arrange a viewing please
contact the sole agents:

Crossland Otter Hunt
Phil Frenay | phil@coh.eu
Charlotte Steele | charlotte@coh.eu

06/22