

43 New Bond Street London W1

Fully Fitted Mayfair Office - VAT Exempt

3rd Floor : 1,740 sq ft (161.6 m²)



- Located in the heart of Mayfair
- Fully fitted
- Air conditioning
- Kitchen
- Passenger lift
- Potential refurbishment to take place

43 New Bond Street London W1

Location

The property is located in the heart of Mayfair, on the east side New Bond Street, close to its junction with Maddox Street. New Bond Street and nearby Oxford Street offers a wealth of shops and restaurants.

Transport links are excellent, with Oxford Circus, Bond Street and Green Park stations offering access to the Bakerloo, Central, Jubilee, Victoria and new Elizabeth lines.

Description

The available accommodation comprises the entire third floor of 1,740 sq ft, which is fully fitted out to provide a boardroom, private offices and open plan office space.

Rent

A new lease is available for a term by arrangement.

Rent

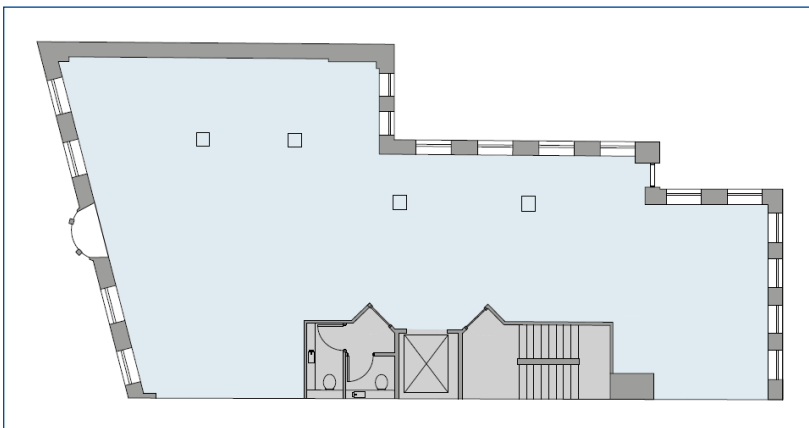
Quoting £65.00 per sq ft.

Rates

£25.98 per sq ft.

Service Charge

£13.03 per sq ft.



For further information or to
arrange a viewing please
contact the sole agents:

Crossland Otter Hunt

Richard Lockhart | richard@coh.eu
Jess Flather | jessica@coh.eu

08/21