

4 Fitzhardinge Street, W1

Chairman's Suite to Let

First Floor : 780 sq ft (72.46 m²)



- High quality boutique accommodation
- Comfort cooling
- Attractive period detailing
- Manned reception
- Refurbished common parts
- Generous 4m ceiling heights
- Shared use of the ground floor boardroom

4 Fitzhardinge Street, W1

Location

The property is situated on the north side of the street, which runs between Portman Square and Manchester Square. Bond Street (Central and Jubilee lines) and Baker Street (Jubilee, Bakerloo, Metropolitan, Circle and Hammersmith & City lines) underground stations are both within easy walking distance.

Description

The accommodation comprises two interlinking rooms which both benefit from exquisite period detailing, a generous ceiling height and excellent natural light throughout.

The front suite is currently set up as a chairman's office and selected furnishings can be made available by separate arrangement.

There is shared use of a well presented boardroom which is located on the ground floor and is available to use by separate arrangement.

Lease

Available by way of a new lease direct from the landlord.

Rent

£89.50 per sq ft.

Rates

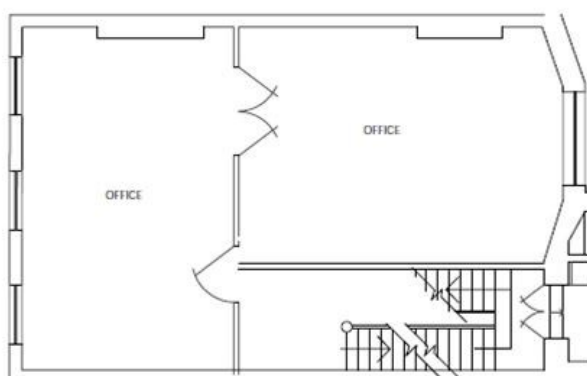
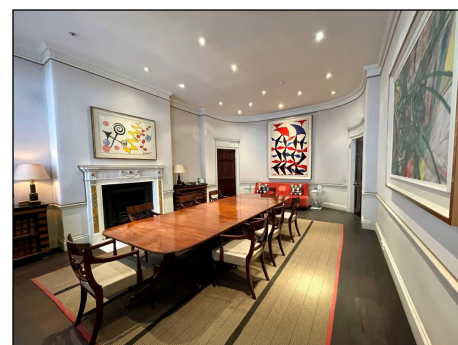
£29.39 per sq ft.

Service Charge

Fixed at £10.00 psf with annual uplifts in line with RPI.

Energy Performance

TBC.



For further information or to arrange a viewing please contact the sole agents:

Crossland Otter Hunt
Nick Sinclair | nick@coh.eu
Charlotte Steele | charlotte@coh.eu

09.21