

## Coin House, 2 Gees Court London W1

Fitted Offices with Roof Terrace

Fifth Floor : 3,400 sq ft



- Private roof terrace
- Air cooling
- Plaster ceilings
- Substantial window frontage
- Fitted office space
- Furniture in situ
- Demised WCs
- LED lighting
- Light, bright office space

## Coin House, 2 Gees Court London W1

### Location

Situated on a corner site off Oxford Street, and providing access into St Christopher's Place. Bond Street underground station (Central, Jubilee and Elizabeth lines) is opposite Gees Court.

### Description

The entrance hall was refurbished a couple of years ago and the fifth floor benefits from a fit out consisting off three meeting rooms and a large kitchenette / breakout area. The main office area has 32 open-plan workstations.

### Lease

A new lease is available directly from the landlord.

### Rent

Upon application.

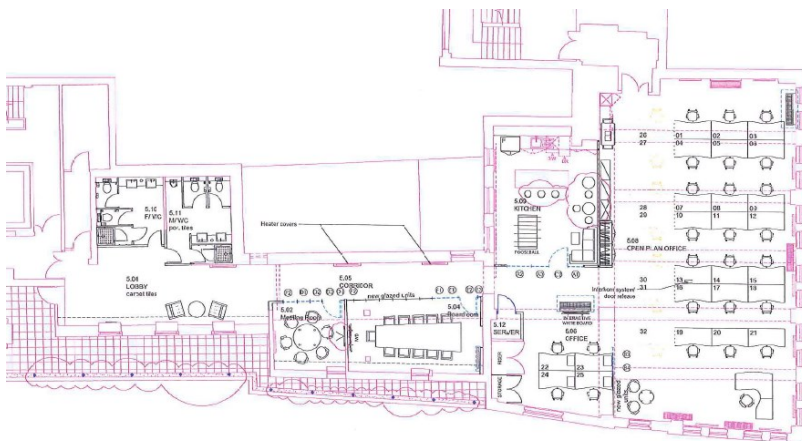
### Rates

Rateable Value: £174,000.

Rates payable: estimated at £27.23 per sq ft.

### Service Charge

£10.69 per sq ft.



For further information or  
to arrange a viewing, please  
contact the sole agents:

Crossland Otter Hunt

Richard Lockhart | [richard@coh.eu](mailto:richard@coh.eu)  
Bryan Pontifex | [bryan@coh.eu](mailto:bryan@coh.eu)

09.21

020 7408 1114 [www.coh.eu](http://www.coh.eu)

Disclaimer: Crossland Otter Hunt. These particulars are not to be considered a formal offer; they are for information only and give a general idea of the property. They are not to be taken as forming any part of a resulting contract, nor to be relied upon as statements or representations of fact. Whilst every care is taken in their preparation, the vendors or lessors accept no liability as to their accuracy. Unless otherwise stated, all prices and rents are quoted exclusive of VAT.