

25 Upper Brook Street, London W1

Plug & Play Period Office Available

Lower Ground Floor - 1,622 sq ft (151m²)

Flexible terms from one year upwards



- Fully furnished throughout
- Professional manned reception
- Air conditioned
- G Network fibre installed
- Short-form leasing available
- Flood wired

25 Upper Brook Street London W1

Location

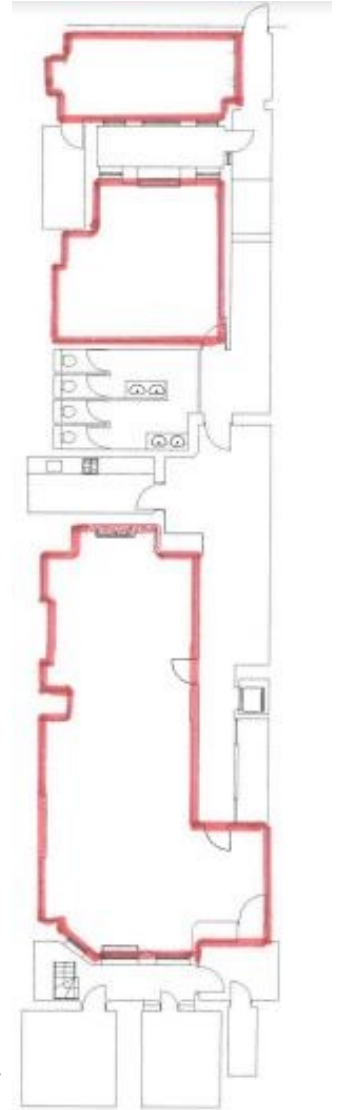
The property is situated on the north side of the thoroughfare between Park Lane and Grosvenor Street in the heart of Mayfair.

Marble Arch (Central line) and Bond Street (Central and Jubilee lines) underground stations are within a short walk with several public car parks nearby.

Description

The accommodation comprises the entire lower ground floor, which is fully furnished throughout, providing a plug and play option with flexible lease terms available from one year upwards.

Rent	£49.50 per sq ft
Business Rates	£22.25 per sq ft (2020/21)
Service Charge	Fixed at £13.00 per sq ft, to increase annually in line with RPI.
Total	£84.75 per sq ft £137,471 per annum



Not to scale

For further information or to arrange a viewing please contact the sole agents:

Crossland Otter Hunt
Jess Flather / Nick Sinclair
jessica@coh.eu / nick@coh.eu

Website
mayfairofficesuites.com

09/20

020 7408 1114 www.coh.eu

Disclaimer: Crossland Otter Hunt. These particulars are not to be considered a formal offer; they are for information only and give a general idea of the property. They are not to be taken as forming any part of a resulting contract, nor to be relied upon as statements or representations of fact. Whilst every care is taken in their preparation, the vendors or lessors accept no liability as to their accuracy. Unless otherwise stated, all prices and rents are quoted exclusive of VAT.