

# Queensberry House Old Burlington Street, London

Part 3<sup>rd</sup> Floor : 2,821 sq ft (262 m<sup>2</sup>)



- Large reception with concierge
- Comprehensively refurbished
- 400 mm raised floor
- 2.7m floor-to-ceiling height
- New four pipe fan coil air conditioning
- LED lighting
- Metal plank ceiling
- 4x passenger lifts
- Showers
- Parking onsite
- Wired score - Gold

## Queensberry House, W1

### Location

The property is located in the heart of Mayfair, on the eastern side of Old Burlington Street, between the junctions with Clifford Street and Burlington Gardens. Green Park (Jubilee, Piccadilly and Victoria lines), Piccadilly Circus (Bakerloo and Piccadilly lines), Oxford Circus (Bakerloo, Central and Victoria lines) and Bond Street (Central, Jubilee and Elizabeth lines) stations are all within short walking distance.

### Description

The newly refurbished accommodation is located on the third floor, with views over Savile Row. The suite is column free with 14 windows providing excellent natural light throughout.

### Lease

A new effective FRI lease is available for a term to be agreed.

### Rent

£105 per sq ft.

### Rates

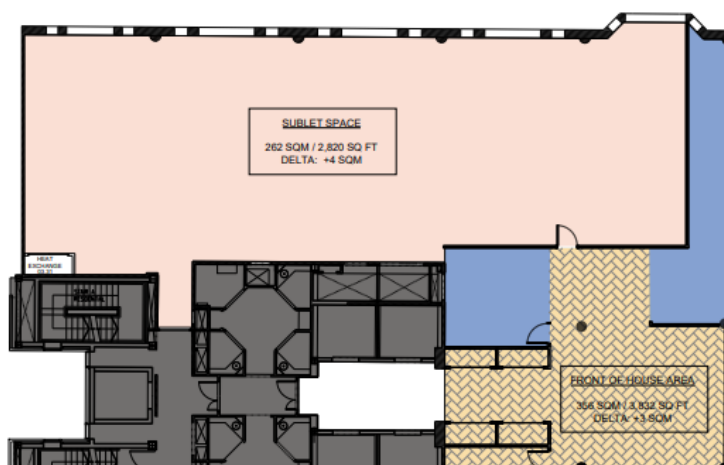
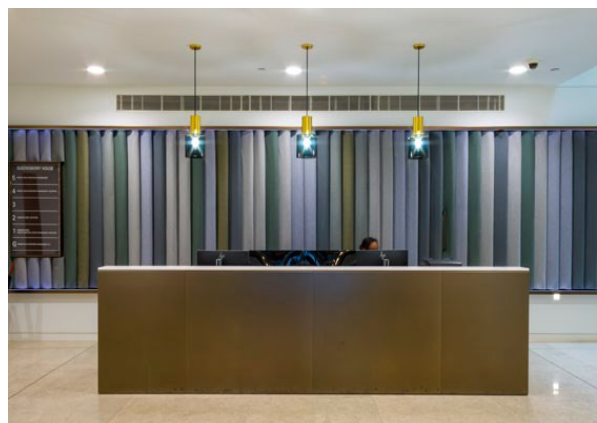
£51.58 per sq ft (2020/21).

### Service Charge

£16.50 per sq ft.

### EPC

D-87.



Plan not to scale

For further information  
or to arrange a viewing  
please contact the  
sole agents:

Nick Sinclair | [nick@coh.eu](mailto:nick@coh.eu)  
Jess Flather | [jessica@coh.eu](mailto:jessica@coh.eu)

Online Tour: [CLICK HERE](#)

10/20

020 7408 1114 [www.coh.eu](http://www.coh.eu)

Disclaimer: Crossland Otter Hunt. These particulars are not to be considered a formal offer; they are for information only and give a general idea of the property. They are not to be taken as forming any part of a resulting contract, nor to be relied upon as statements or representations of fact. Whilst every care is taken in their preparation, the vendors or lessors accept no liability as to their accuracy. Unless otherwise stated, all prices and rents are quoted exclusive of VAT.